

BMI1 RABBIT MAB

Cat.#: N263240

Product Name: Anti-BMI1 Rabbit Monoclonal Antibody

Synonyms: BMI1; PCGF4; RNF51; Polycomb complex protein BMI-1; Polycomb group RING finger protein 4; RING finger protein 51

UNIPROT ID: P35226

Background: The polycomb group (PcG) of proteins contributes to the maintenance of cell identity, stem cell self-renewal, cell cycle regulation, and oncogenesis by maintaining the silenced state of genes that promote cell lineage specification, cell death, and cell-cycle arrest. PcG proteins exist in two complexes that cooperate to maintain long-term gene silencing through epigenetic chromatin modifications. The first complex, EED-EZH2, is recruited to genes by DNA-binding transcription factors and methylates histone H3 on Lys27.

Immunogen: Recombinant protein of human Bmi1

Applications: WB, ICC/IF, IP

Recommended Dilutions: WB: 1/500-1/1000 IF: 1/50-1/200 IP: 1/20

Host Species: Rabbit

Clonality: Rabbit Monoclonal

Clone ID: R08-7A6

MW: Calculated MW: 37 kDa; Observed MW: 43 kDa

Isotype: IgG

Purification: Affinity Purified

Species Reactivity: Human, Mouse, Rat

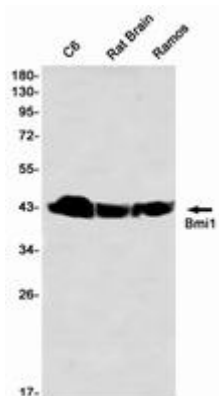
Conjugation: Unconjugated

Modification: Unmodified

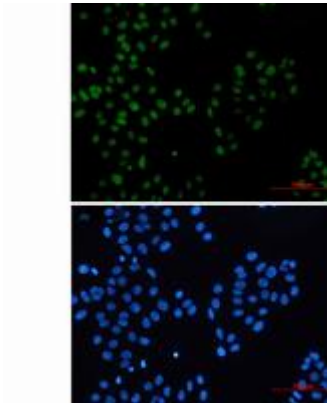
Constituents: PBS (without Mg²⁺ and Ca²⁺), pH 7.3 containing 50% glycerol, 0.5% BSA and 0.02% sodium azide

Research Areas: Cell Biology

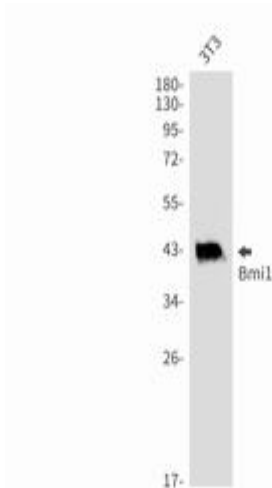
Storage & Shipping: Store at -20°C. Avoid repeated freezing and thawing



Western blot analysis of Bmi1 in C6, Rat Brain, Ramos lysates using Bmi1 antibody



Immunocytochemistry analysis of Bmi1 (green) in HeLa using Bmi1 antibody, and DAPI (blue).



Western blot analysis of Bmi1 in 3T3 lysates using Bmi1 antibody.