

## BMP10 RABBIT PAB

**Cat.#:** S221620

**Product Name:** Anti-BMP10 Rabbit Polyclonal Antibody

**Synonyms:**

**UNIPROT ID:** O95393 (Gene Accession - NP\_055297 )

**Background:** The protein encoded by this gene is a member of the TGF-beta family of growth factors. Data suggest that the similar protein in mouse plays an important role in trabeculation of the embryonic heart. In human, this protein may signal through receptor serine/threonine kinases.

**Immunogen:** Synthetic peptide of human BMP10

**Applications:** ELISA, WB, IHC

**Recommended Dilutions:** IHC: 25-100;WB: 500-2000;ELISA: 5000-10000

**Host Species:** Rabbit

**Clonality:** Rabbit Polyclonal

**Isotype:** Immunogen-specific rabbit IgG

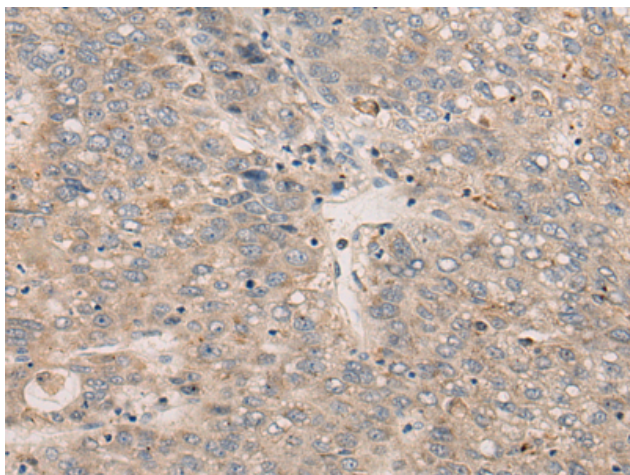
**Purification:** Antigen affinity purification

**Species Reactivity:** Human, Mouse, Rat

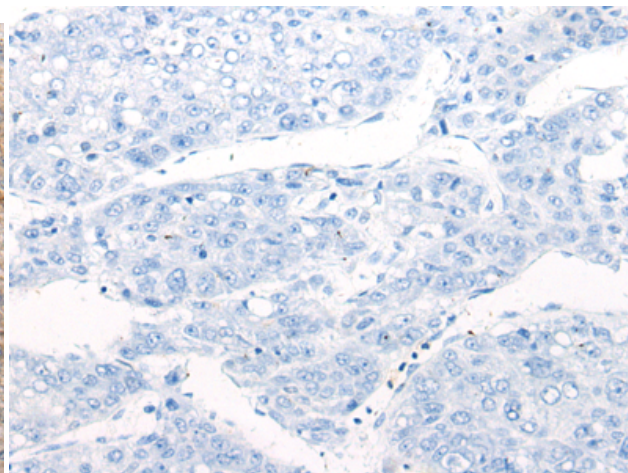
**Constituents:** PBS (without Mg<sup>2+</sup> and Ca<sup>2+</sup>), pH 7.4, 150 mM NaCl, 0.05% Sodium Azide and 40% glycerol

**Research Areas:** Signal Transduction, Cardiovascular

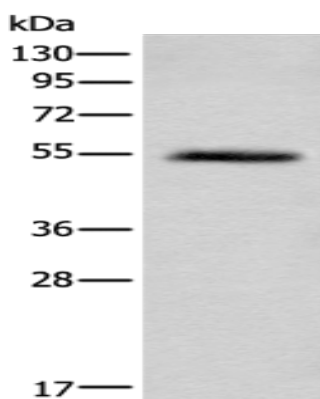
**Storage & Shipping:** Store at -20°C. Avoid repeated freezing and thawing



Immunohistochemistry analysis of paraffin embedded Human liver cancer tissue using 221620 (BMP10 Antibody) at a dilution of 1/35 (Secreted).



In comparison with the IHC on the left, the same paraffin-embedded Human liver cancer tissue is first treated with the synthetic peptide and then with 221620 (Anti-BMP10 Antibody) at dilution 1/35.



Gel: 8% SDS-PAGE, Lysate: 40  $\mu$ g;  
Lane: Human breast cancer tissue lysate;  
Primary antibody: 221620 (BMP10 Antibody) at dilution 1/350;  
Secondary antibody: Goat anti rabbit IgG at 1/8000 dilution;  
Exposure time: 4 minutes