

BMP2 RABBIT MAB

Cat.#: N261928

Product Name: Anti-BMP2 Rabbit Monoclonal Antibody

Synonyms: BMP2; BMP2A; Bone morphogenetic protein 2; BMP-2; Bone morphogenetic protein 2A; BMP-2A

UNIPROT ID: P12643

Background: Bone morphogenetic proteins (BMPs) are members of the TGF β superfamily. BMPs are involved in the induction of cartilage and bone formation. Induces cartilage and bone formation.

Immunogen: Recombinant protein of human BMP2

Applications: WB, ICC/IF

Recommended Dilutions: WB: 1/500-1/1000 IF: 1/50-1/200

Host Species: Rabbit

Clonality: Rabbit Monoclonal

Clone ID: R03-3H9

MW: Calculated MW: 45 kDa; Observed MW: 30 kDa

Isotype: IgG

Purification: Affinity Purified

Species Reactivity: Human

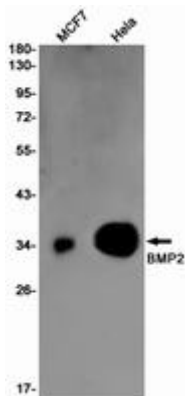
Conjugation: Unconjugated

Modification: Unmodified

Constituents: PBS (without Mg²⁺ and Ca²⁺), pH 7.3 containing 50% glycerol, 0.5% BSA and 0.02% sodium azide

Research Areas: Cancer

Storage & Shipping: Store at -20°C. Avoid repeated freezing and thawing



Western blot analysis of BMP2 in MCF-7, HeLa lysates using BMP2 antibody.



Product Description

Pioneering GTPase and Oncogene Product Development since 2010
