

## BMP3 RABBIT PAB

**Cat.#:** S210170

**Product Name:** Anti-BMP3 Rabbit Polyclonal Antibody

**Synonyms:** BMP-3A

**UNIPROT ID:** P12645 (Gene Accession - BC096269 )

**Background:** BMP3 belongs to the transforming growth factor-beta (TGFB) superfamily. Bone morphogenic protein, also known as osteogenin, induces bone formation. Negatively regulates bone density. Antagonizes the ability of certain osteogenic BMPs to induce osteoprogenitor differentiation and ossification. Expressed in adult and fetal cartilage. Highly expressed in fracture tissue, particularly in osteoblasts, osteoclasts and chondroblasts.

**Immunogen:** Fusion protein of human BMP3

**Applications:** ELISA, IHC

**Recommended Dilutions:** IHC: 15-50; ELISA: 1000-2000

**Host Species:** Rabbit

**Clonality:** Rabbit Polyclonal

**Isotype:** Immunogen-specific rabbit IgG

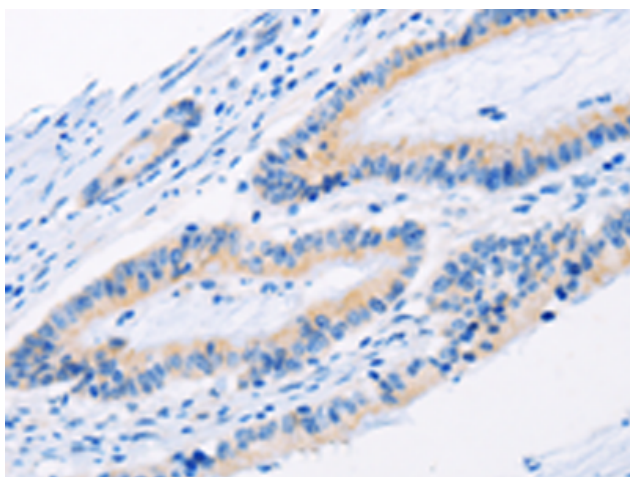
**Purification:** Antigen affinity purification

**Species Reactivity:** Human, Mouse, Rat

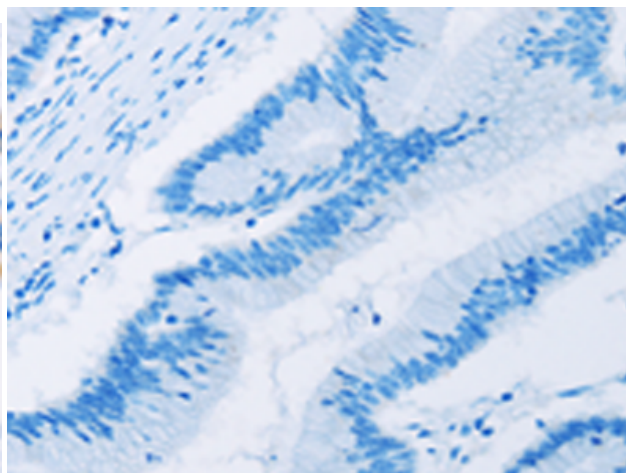
**Constituents:** PBS (without Mg<sup>2+</sup> and Ca<sup>2+</sup>), pH 7.4, 150 mM NaCl, 0.05% Sodium Azide and 40% glycerol

**Research Areas:** Signal Transduction

**Storage & Shipping:** Store at -20°C. Avoid repeated freezing and thawing



Immunohistochemistry analysis of paraffin embedded Human colon cancer tissue using 210170(BMP3 Antibody) at a dilution of 1/30(Cytoplasm).



In comparison with the IHC on the left, the same paraffin-embedded Human colon cancer tissue is first treated with the fusion protein and then with 210170(Anti-BMP3 Antibody) at dilution 1/30.