

## BMP4 RABBIT PAB

**Cat.#:** S215378

**Product Name:** Anti-BMP4 Rabbit Polyclonal Antibody

**Synonyms:** ZYME; BMP2B; OFC11; BMP2B1; MCOPS6

**UNIPROT ID:** P12644 (Gene Accession - NP\_001193 )

**Background:** This gene encodes a member of the bone morphogenetic protein (BMP) family of proteins, which is part of the transforming growth factor-beta (TGF-beta) superfamily. Members of the BMP family play an important role in bone and cartilage development. The encoded preproprotein is proteolytically processed to generate each subunit of the disulfide-linked homodimer. Mutations in this gene are associated with orofacial cleft and microphthalmia in human patients. The encoded protein may also be involved in the pathology of multiple cardiovascular diseases and human cancers. Alternative splicing results in multiple transcript variants.

**Immunogen:** Synthetic peptide of human BMP4

**Applications:** ELISA, WB, IHC

**Recommended Dilutions:** IHC: 20-100;WB: 200-1000;ELISA: 5000-10000

**Host Species:** Rabbit

**Clonality:** Rabbit Polyclonal

**Isotype:** Immunogen-specific rabbit IgG

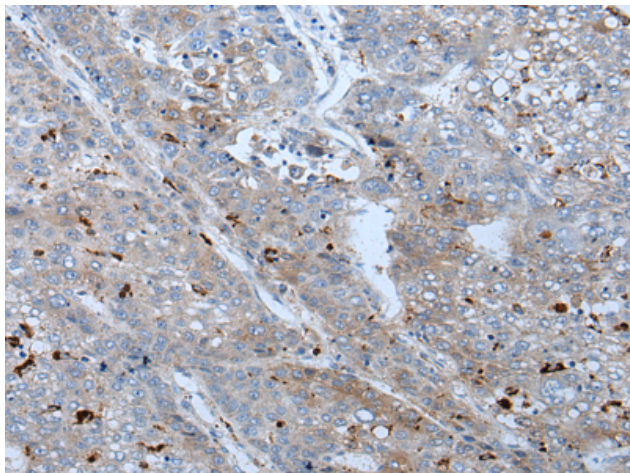
**Purification:** Antigen affinity purification

**Species Reactivity:** Human, Mouse, Rat

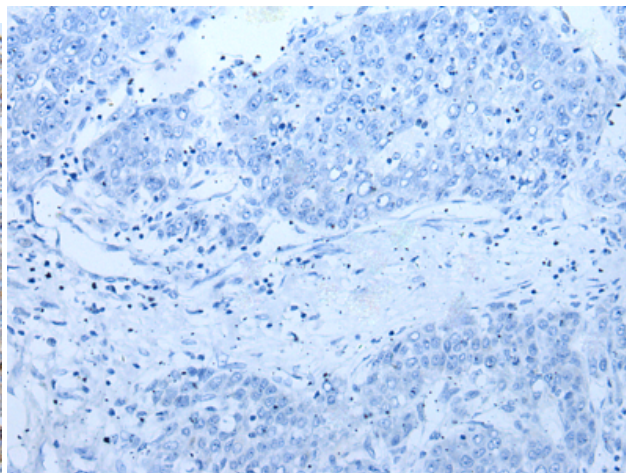
**Constituents:** PBS (without Mg<sup>2+</sup> and Ca<sup>2+</sup>), pH 7.4, 150 mM NaCl, 0.05% Sodium Azide and 40% glycerol

**Research Areas:** Signal Transduction, Cancer, Cardiovascular, Developmental Biology

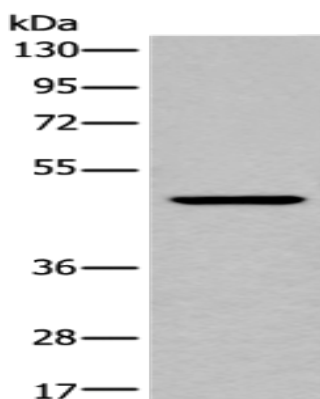
**Storage & Shipping:** Store at -20°C. Avoid repeated freezing and thawing



Immunohistochemistry analysis of paraffin embedded Human liver cancer tissue using 215378 (BMP4 Antibody) at a dilution of 1/25 (Secreted).



In comparison with the IHC on the left, the same paraffin-embedded Human liver cancer tissue is first treated with the synthetic peptide and then with 215378 (Anti-BMP4 Antibody) at dilution 1/25.



Gel: 8% SDS-PAGE, Lysate: 40  $\mu$ g;  
Lane: Hela cell lysate;  
Primary antibody: 215378 (BMP4 Antibody) at dilution 1/200;  
Secondary antibody: Goat anti rabbit IgG at 1/8000 dilution;  
Exposure time: 1 minute