

BNIP3L RABBIT PAB

Cat.#: S220382

Product Name: Anti-BNIP3L Rabbit Polyclonal Antibody

Synonyms: NIX; BNIP3a

UNIPROT ID: O60238 (Gene Accession - NP_004322)

Background: This gene is a member of the BCL2/adenovirus E1B 19 kd-interacting protein (BNIP) family. It interacts with the E1B 19 kDa protein, which protects cells from virally-induced cell death. The encoded protein also interacts with E1B 19 kDa-like sequences of BCL2, another apoptotic protector. This protein counteracts the apoptotic inducer BNIP3 and may play a role in tumor suppression.

Immunogen: Synthetic peptide of human BNIP3L

Applications: ELISA, IHC

Recommended Dilutions: IHC: 15-50; ELISA: 1000-2000

Host Species: Rabbit

Clonality: Rabbit Polyclonal

Isotype: Immunogen-specific rabbit IgG

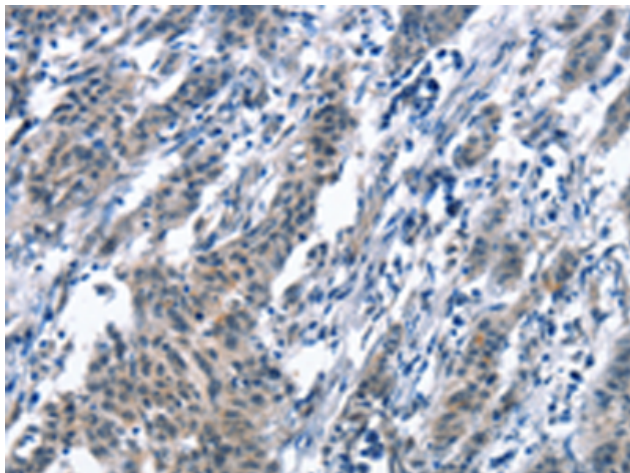
Purification: Antigen affinity purification

Species Reactivity: Human, Mouse

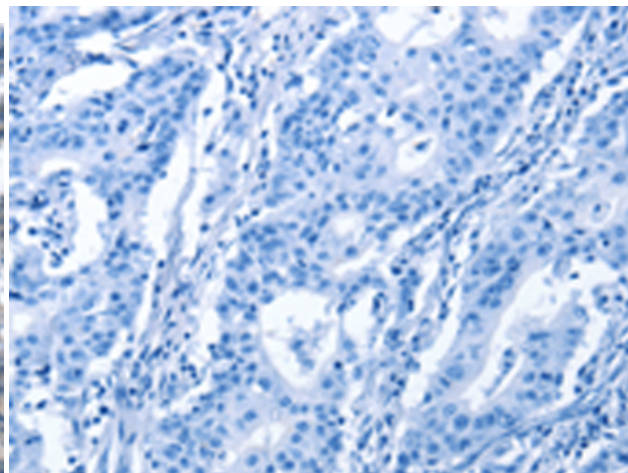
Constituents: PBS (without Mg²⁺ and Ca²⁺), pH 7.4, 150 mM NaCl, 0.05% Sodium Azide and 40% glycerol

Research Areas: Cancer, Metabolism, Cardiovascular

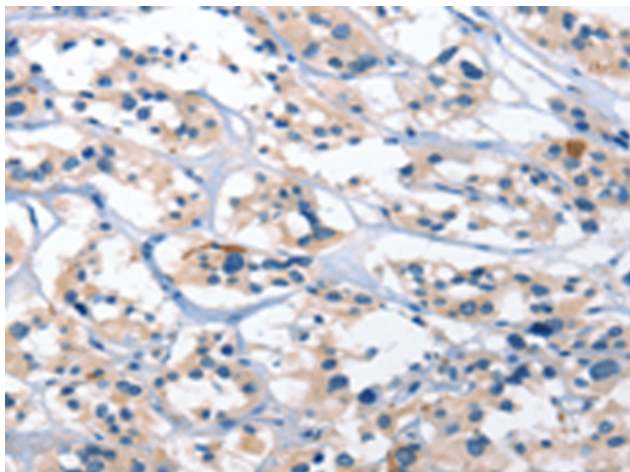
Storage & Shipping: Store at -20°C. Avoid repeated freezing and thawing



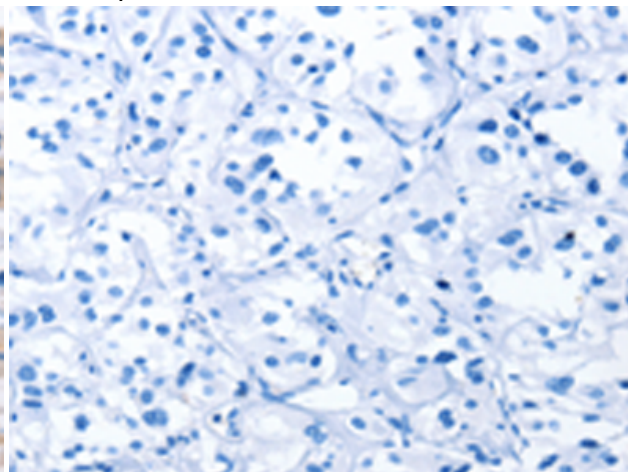
Immunohistochemistry analysis of paraffin embedded Human gastric cancer tissue using 220382 (BNIP3L Antibody) at a dilution of 1/30 (Cytoplasm).



In comparison with the IHC on the left, the same paraffin-embedded Human gastric cancer tissue is first treated with the synthetic peptide and then with 220382 (Anti-BNIP3L Antibody) at dilution 1/30.



The image on the left is immunohistochemistry of paraffin-embedded Human thyroid cancer tissue using 220382 (Anti-BNIP3L Antibody) at a dilution of 1/30.



In comparison with the IHC on the left, the same paraffin-embedded Human thyroid cancer tissue is first treated with synthetic peptide and then with D261458 (Anti-BNIP3L Antibody) at dilution 1/30.