

## BOLL RABBIT PAB

**Cat.#:** S210030

**Product Name:** Anti-BOLL Rabbit Polyclonal Antibody

**Synonyms:** BOULE

**UNIPROT ID:** Q8N9W6 (Gene Accession - BC033674 )

**Background:** This gene belongs to the DAZ gene family required for germ cell development. It encodes an RNA-binding protein which is more similar to Drosophila Boule than to human proteins encoded by genes DAZ (deleted in azoospermia) or DAZL (deleted in azoospermia-like). Loss of this gene function results in the absence of sperm in semen (azoospermia). Histological studies demonstrated that the primary defect is at the meiotic G2/M transition. Two alternatively spliced transcript variants encoding distinct isoforms have been found for this gene.

**Immunogen:** Fusion protein of human BOLL

**Applications:** ELISA, IHC

**Recommended Dilutions:** IHC: 25-50; ELISA: 500-5000

**Host Species:** Rabbit

**Clonality:** Rabbit Polyclonal

**Isotype:** Immunogen-specific rabbit IgG

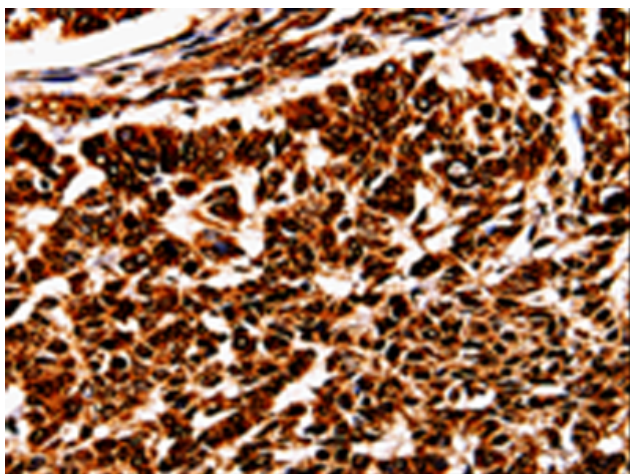
**Purification:** Antigen affinity purification

**Species Reactivity:** Human, Mouse

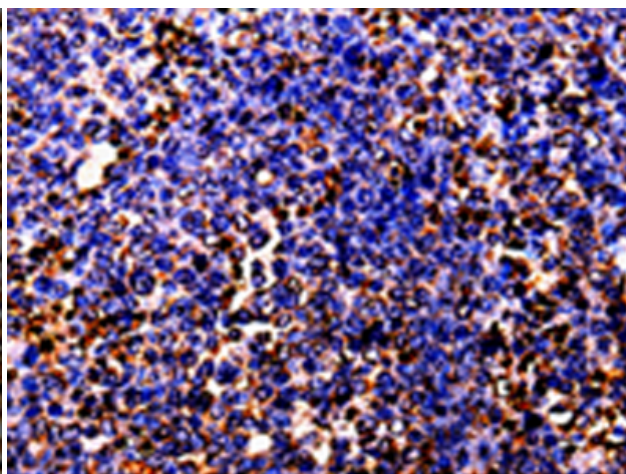
**Constituents:** PBS (without Mg<sup>2+</sup> and Ca<sup>2+</sup>), pH 7.4, 150 mM NaCl, 0.05% Sodium Azide and 40% glycerol

**Research Areas:** Epigenetics and Nuclear Signaling

**Storage & Shipping:** Store at -20°C. Avoid repeated freezing and thawing



Immunohistochemistry analysis of paraffin-embedded Human lung cancer tissue using 210030(BOLL Antibody) at a dilution of 1/10(Cytoplasm, Nucleus).



Immunohistochemistry analysis of paraffin-embedded Human ovarian cancer tissue using 210030(Anti-BOLL Antibody) at a dilution of 1/10.