

BORA RABBIT MAB

Cat.#: N263241

Product Name: Anti-Bora Rabbit Monoclonal Antibody

Synonyms: C13orf34

UNIPROT ID: Q6PGQ7

Background: Required for the activation of AURKA at the onset of mitosis.

Immunogen: A synthetic peptide of human Bora

Applications: WB,IP

Recommended Dilutions: WB: 1/500-1/1000 IP: 1/20

Host Species: Rabbit

Clonality: Rabbit Monoclonal

Clone ID: R04-4F1

MW: Calculated MW: 61 kDa; Observed MW: 61 kDa

Isotype: IgG

Purification: Affinity Purified

Species Reactivity: Human,Rat

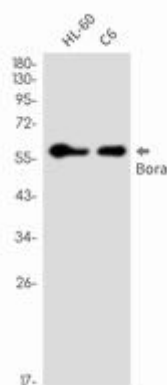
Conjugation: Unconjugated

Modification: Unmodified

Constituents: PBS (without Mg²⁺ and Ca²⁺), pH 7.3 containing 50% glycerol, 0.5% BSA and 0.02% sodium azide

Research Areas: Cell Biology

Storage & Shipping: Store at -20°C. Avoid repeated freezing and thawing



Western blot analysis of Bora in HL-60, C6 lysates using Bora antibody.