

## BORA RABBIT MAB

**Cat.#:** N261932

**Product Name:** Anti-Bora Rabbit Monoclonal Antibody

**Synonyms:** C13orf34

**UNIPROT ID:** Q6PGQ7

**Background:** Required for the activation of AURKA at the onset of mitosis.

**Immunogen:** Recombinant protein of human Bora

**Applications:** WB,IP

**Recommended Dilutions:** WB: 1/500-1/1000 IP: 1/20

**Host Species:** Rabbit

**Clonality:** Rabbit Monoclonal

**Clone ID:** R06-5B4

**MW:** Calculated MW: 61 kDa; Observed MW: 61 kDa

**Isotype:** IgG

**Purification:** Affinity Purified

**Species Reactivity:** Human,Mouse,Rat

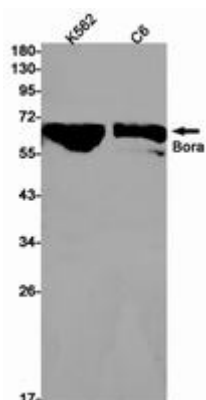
**Conjugation:** Unconjugated

**Modification:** Unmodified

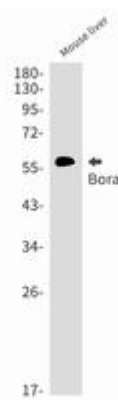
**Constituents:** PBS (without Mg<sup>2+</sup> and Ca<sup>2+</sup>), pH 7.3 containing 50% glycerol, 0.5% BSA and 0.02% sodium azide

**Research Areas:** Cell Biology

**Storage & Shipping:** Store at -20°C. Avoid repeated freezing and thawing



Western blot analysis of Bora in K562, C6 lysates using Bora antibody.



Western blot analysis of Bora in mouse liver lysates using Bora antibody.



# Product Description

Pioneering GTPase and Oncogene Product Development since 2010

---