

## BORCS8 RABBIT PAB

**Cat.#:** S215235

**Product Name:** Anti-BORCS8 Rabbit Polyclonal Antibody

**Synonyms:** MEF2BNB

**UNIPROT ID:** Q96FH0 (Gene Accession - NP\_001139256 )

**Background:** BORCS8, also known as BORCS8, the gene represents numerous read-through transcripts that span geneID:729991 and 100271849. Many read-through transcripts are predicted to be nonsense-mediated decay (NMD) candidates, and are thought to be non-coding. Some transcripts are predicted to be capable of translation reinitiation at a downstream AUG, resulting in expression of at least one isoform of myocyte enhancer factor 2B (MEF2B) from this read-through locus.

**Immunogen:** Synthetic peptide of human BORCS8

**Applications:** ELISA, IHC

**Recommended Dilutions:** IHC: 35-200; ELISA: 5000-10000

**Host Species:** Rabbit

**Clonality:** Rabbit Polyclonal

**Isotype:** Immunogen-specific rabbit IgG

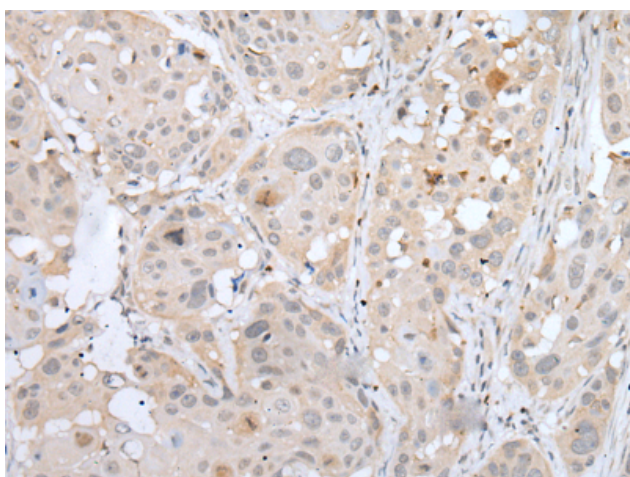
**Purification:** Antigen affinity purification

**Species Reactivity:** Human

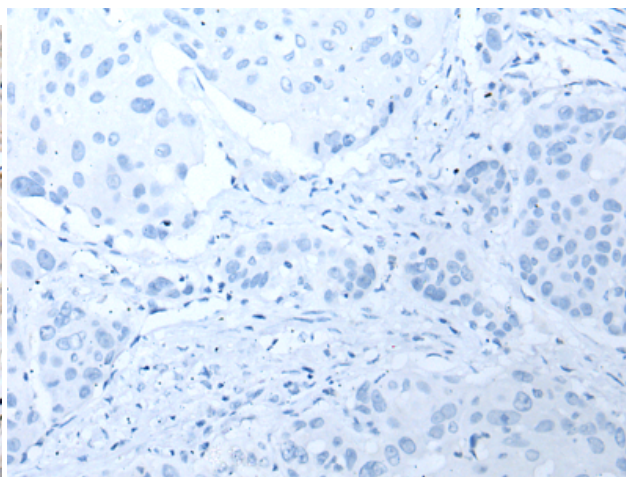
**Constituents:** PBS (without Mg<sup>2+</sup> and Ca<sup>2+</sup>), pH 7.4, 150 mM NaCl, 0.05% Sodium Azide and 40% glycerol

**Research Areas:** Cell Biology

**Storage & Shipping:** Store at -20°C. Avoid repeated freezing and thawing



Immunohistochemistry analysis of paraffin embedded Human esophagus cancer tissue using 215235(BORCS8 Antibody) at a dilution of 1/50(Cytoplasm and Cell membrane).



In comparison with the IHC on the left, the same paraffin-embedded Human esophagus cancer tissue is first treated with the synthetic peptide and then with 215235(Anti-BORCS8 Antibody) at dilution 1/50.