

## BOVINE SERUM ALBUMIN RABBIT PAB

**Cat.#:** N225517

**Product Name:** Anti-Bovine Serum Albumin Rabbit pAb

**Synonyms:** BSA; ALB; Albumin; HSA; PRO0883; Serum Albumin

**UNIPROT ID:** P02769

**Background:** Serum albumin, the main protein of plasma, has a good binding capacity for water, Ca<sup>2+</sup>, Na<sup>+</sup>, K<sup>+</sup>, fatty acids, hormones, bilirubin and drugs. Its main function is the regulation of the colloidal osmotic pressure of blood. Major zinc transporter in plasma, typically binds about 80% of all plasma zinc.

**Immunogen:** Recombinant Protein of Bovine Serum Albumin

**Applications:** WB,ELISA

**Recommended Dilutions:** WB: 1/500-1/1000 ELISA: 1/10000

**Host Species:** Rabbit

**Clonality:** Rabbit Polyclonal

**Clone ID:** -

**MW:** Calculated MW: 69 kDa; Observed MW: 66 kDa

**Isotype:** IgG

**Purification:** Affinity Purified

**Species Reactivity:** Bovine

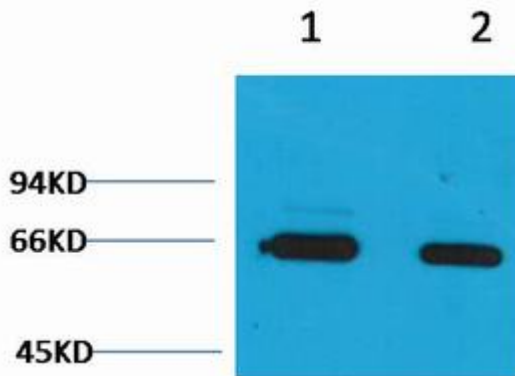
**Conjugation:** Unconjugated

**Modification:** Unmodified

**Constituents:** PBS (without Mg<sup>2+</sup> and Ca<sup>2+</sup>), pH 7.3 containing 50% glycerol, 0.5% BSA and 0.02% sodium azide

**Research Areas:** Cardiovascular

**Storage & Shipping:** Store at -20°C. Avoid repeated freezing and thawing



Western blot analysis of Bovine Serum Albumin in Bovine Serum Albumin lysates using Bovine Serum Albumin antibody.