

## BPIFB1 RABBIT PAB

**Cat.#:** S218737

**Product Name:** Anti-BPIFB1 Rabbit Polyclonal Antibody

**Synonyms:** LPLUNC1; C20orf114

**UNIPROT ID:** Q8TDL5 (Gene Accession - BC008429 )

**Background:** The protein encoded by this gene may be involved in the innate immune response to bacterial exposure in the mouth, nasal cavities, and lungs. The encoded protein is secreted and is a member of the BPI/LBP/PLUNC protein superfamily. This gene is found with other members of the superfamily in a cluster on chromosome 20.

**Immunogen:** Fusion protein of human BPIFB1

**Applications:** ELISA, IHC

**Recommended Dilutions:** IHC: 30-150; ELISA: 5000-10000

**Host Species:** Rabbit

**Clonality:** Rabbit Polyclonal

**Isotype:** Immunogen-specific rabbit IgG

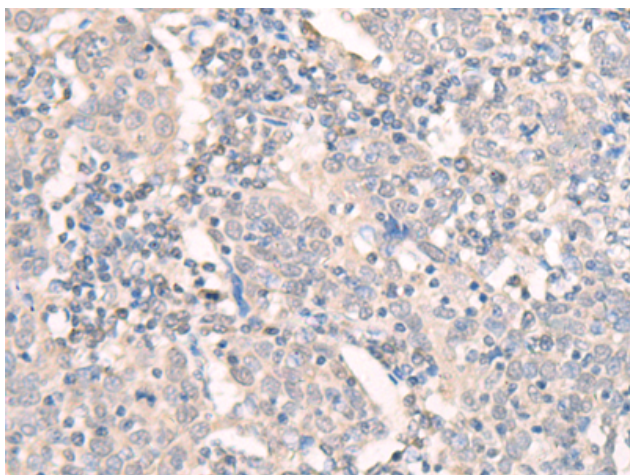
**Purification:** Antigen affinity purification

**Species Reactivity:** Human

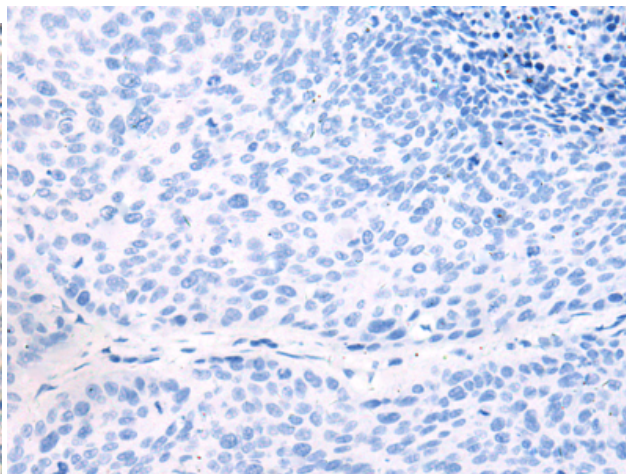
**Constituents:** PBS (without Mg<sup>2+</sup> and Ca<sup>2+</sup>), pH 7.4, 150 mM NaCl, 0.05% Sodium Azide and 40% glycerol

**Research Areas:** Immunology

**Storage & Shipping:** Store at -20°C. Avoid repeated freezing and thawing



Immunohistochemistry analysis of paraffin embedded Human cervical cancer tissue using 218737(BPIFB1 Antibody) at a dilution of 1/20 (Secreted).



In comparison with the IHC on the left, the same paraffin-embedded Human cervical cancer tissue is first treated with the fusion protein and then with 218737 (Anti-BPIFB1 Antibody) at dilution 1/20.