

BPIFB2 RABBIT PAB

Cat.#: S219892

Product Name: Anti-BPIFB2 Rabbit Polyclonal Antibody

Synonyms: RYSR, BPIL1, LPLUNC2, C20orf184, dJ726C3.2

UNIPROT ID: Q8N4F0 (Gene Accession - NP_079503)

Background: This gene encodes a member of the lipid transfer/lipopolysaccharide binding protein (LT/LBP) gene family. It is highly expressed in hypertrophic tonsils. This gene and three other members of the LT/LBP gene family form a cluster on the long arm of chromosome 20.

Immunogen: Synthetic peptide of human BPIFB2

Applications: ELISA, IHC

Recommended Dilutions: IHC: 50-200; ELISA: 1000-5000

Host Species: Rabbit

Clonality: Rabbit Polyclonal

Isotype: Immunogen-specific rabbit IgG

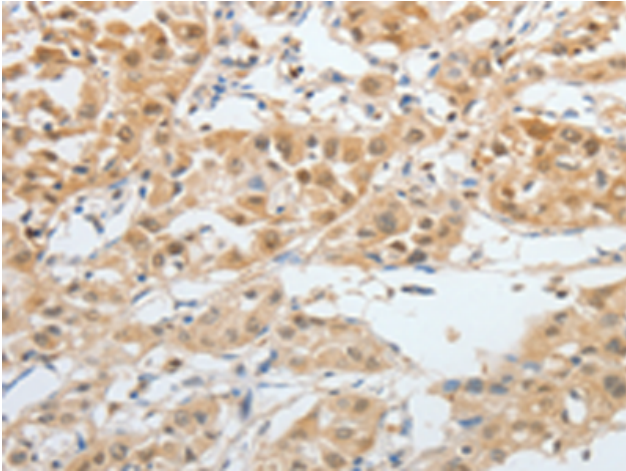
Purification: Antigen affinity purification

Species Reactivity: Human, Mouse

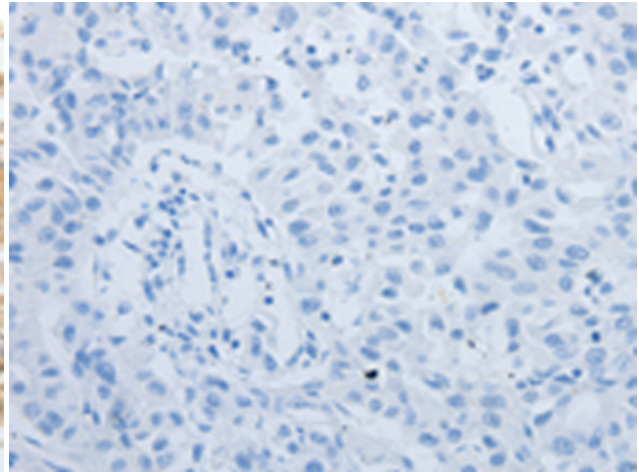
Constituents: PBS (without Mg²⁺ and Ca²⁺), pH 7.4, 150 mM NaCl, 0.05% Sodium Azide and 40% glycerol

Research Areas: Cell Biology

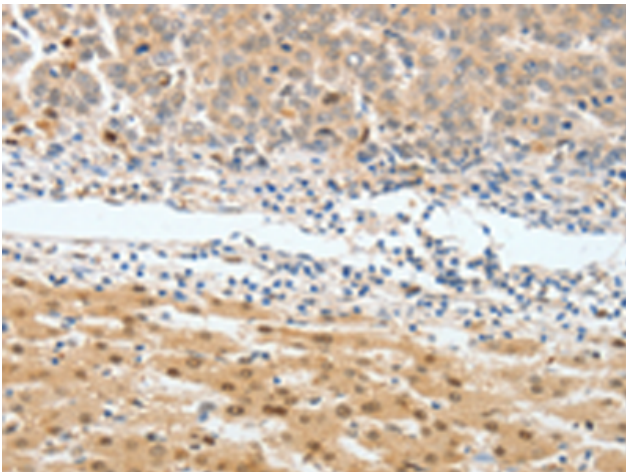
Storage & Shipping: Store at -20°C. Avoid repeated freezing and thawing



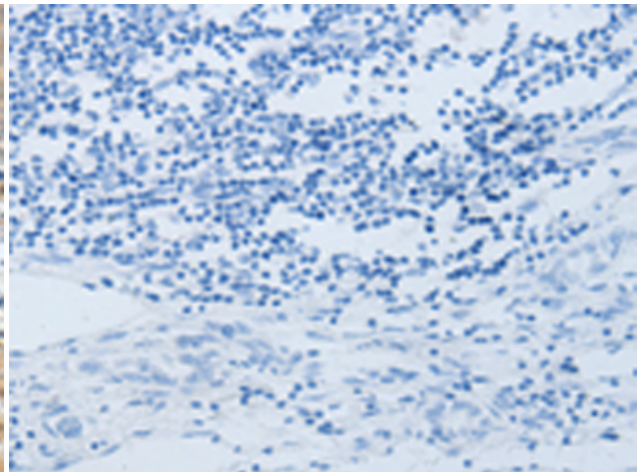
Immunohistochemistry analysis of paraffin embedded Human liver cancer tissue using 219892(BPIFB2 Antibody) at a dilution of 1/45(Cytoplasm).



In comparison with the IHC on the left, the same paraffin-embedded Human liver cancer tissue is first treated with the synthetic peptide and then with 219892(Anti-BPIFB2 Antibody) at dilution 1/45.



The image on the left is immunohistochemistry of paraffin-embedded Human lung cancer tissue using 219892(Anti-BPIFB2 Antibody) at a dilution of 1/45.



In comparison with the IHC on the left, the same paraffin-embedded Human lung cancer tissue is first treated with synthetic peptide and then with D260561(Anti-BPIFB2 Antibody) at dilution 1/45.