

## **BPIFB3 RABBIT PAB**

**Cat.#:** S219893

**Product Name:** Anti-BPIFB3 Rabbit Polyclonal Antibody

**Synonyms:** RYA3, LPLUNC3, C20orf185, dJ726C3.4

**UNIPROT ID:** P59826 (Gene Accession - NP\_872599 )

**Background:** BPI fold-containing family B member 3 may have the capacity to recognize and bind specific classes of odorants. May act as a carrier molecule, transporting odorants across the mucus layer to access receptor sites. May serve as a primary defense mechanism by recognizing and removing potentially harmful odorants or pathogenic microorganisms from the mucosa or clearing excess odorant from mucus to enable new odorant stimuli to be received.

**Immunogen:** Synthetic peptide of human BPIFB3

**Applications:** ELISA, WB, IHC

**Recommended Dilutions:** IHC: 100–300;WB: 1000–5000;ELISA: 2000–10000

**Host Species:** Rabbit

**Clonality:** Rabbit Polyclonal

**Isotype:** Immunogen-specific rabbit IgG

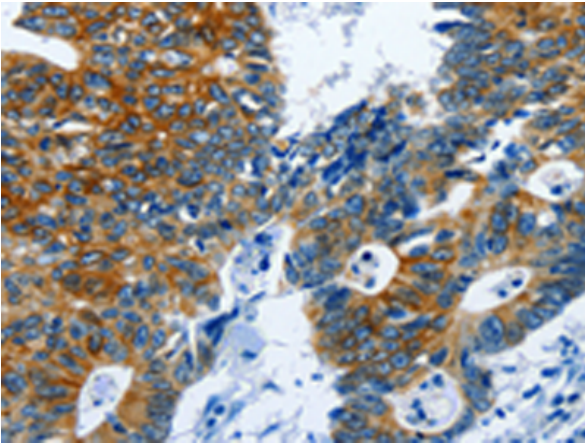
**Purification:** Antigen affinity purification

**Species Reactivity:** Human

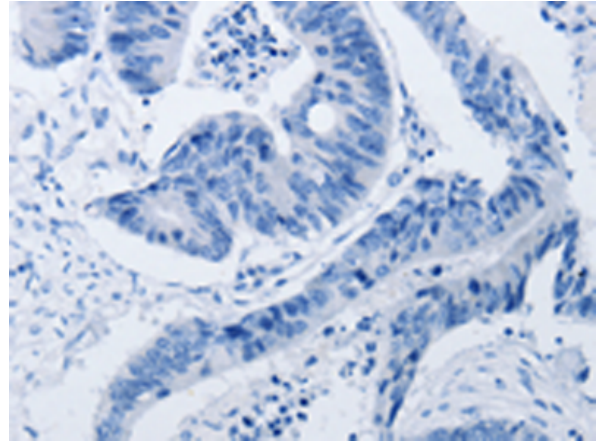
**Constituents:** PBS (without Mg<sup>2+</sup> and Ca<sup>2+</sup>), pH 7.4, 150 mM NaCl, 0.05% Sodium Azide and 40% glycerol

**Research Areas:** Immunology

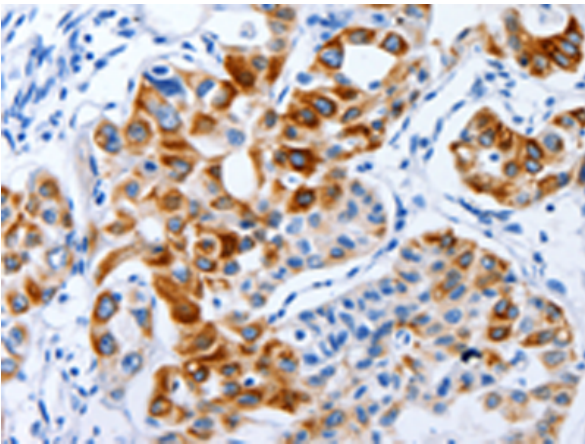
**Storage & Shipping:** Store at -20°C. Avoid repeated freezing and thawing



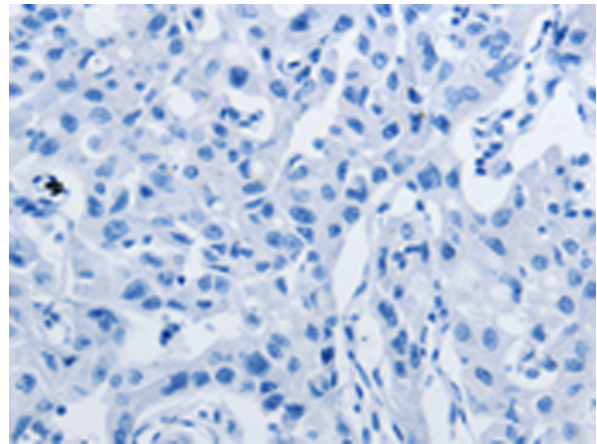
Immunohistochemistry analysis of paraffin embedded Human colon cancer tissue using 219893(BPIFB3 Antibody) at a dilution of 1/120(Cytoplasm).



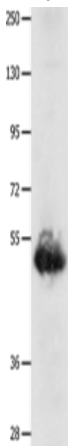
In comparison with the IHC on the left, the same paraffin-embedded Human colon cancer tissue is first treated with the synthetic peptide and then with 219893(Anti-BPIFB3 Antibody) at dilution 1/120.



The image on the left is immunohistochemistry of paraffin-embedded Human lung cancer tissue using 219893(Anti-BPIFB3 Antibody) at a dilution of 1/120.



In comparison with the IHC on the left, the same paraffin-embedded Human lung cancer tissue is first treated with synthetic peptide and then with D260562(Anti-BPIFB3 Antibody) at dilution 1/120.



Gel: 8%SDS-PAGE, Lysate: 40 µg;  
Lane: Human lung cancer tissue;  
Primary antibody: 219893(BPIFB3 Antibody) at dilution 1/1600;  
Secondary antibody: Goat anti rabbit IgG at 1/8000 dilution;  
Exposure time: 30 seconds



# Product Description

Pioneering GTPase and Oncogene Product Development since 2010

---