

## BRAT1 RABBIT MAB

**Cat.#:** N261934

**Product Name:** Anti-BRAT1 Rabbit Monoclonal Antibody

**Synonyms:** BRCA1-associated ATM activator 1; BRCA1-associated protein required for ATM activation protein 1

**UNIPROT ID:** Q6PJG6

**Background:** Involved in DNA damage response; activates kinases ATM, SMC1A and PRKDC by modulating their phosphorylation status following ionizing radiation (IR) stress (PubMed:16452482, PubMed:22977523). Plays a role in regulating mitochondrial function and cell proliferation (PubMed:25070371). Required for protein stability of MTOR and MTOR-related proteins, and cell cycle progress by growth factors (PubMed:25657994).

**Immunogen:** Recombinant protein of human BRAT1

**Applications:** WB,IP

**Recommended Dilutions:** WB: 1/500-1/1000 IP: 1/20

**Host Species:** Rabbit

**Clonality:** Rabbit Monoclonal

**Clone ID:** R02-5A1

**MW:** Calculated MW: 88 kDa; Observed MW: 88 kDa

**Isotype:** IgG

**Purification:** Affinity Purified

**Species Reactivity:** Human

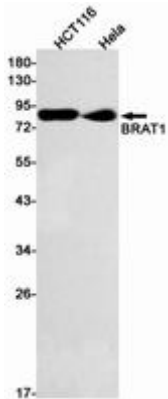
**Conjugation:** Unconjugated

**Modification:** Unmodified

**Constituents:** PBS (without Mg<sup>2+</sup> and Ca<sup>2+</sup>), pH 7.3 containing 50% glycerol, 0.5% BSA and 0.02% sodium azide

**Research Areas:** Epigenetics and Nuclear Signaling

**Storage & Shipping:** Store at -20°C. Avoid repeated freezing and thawing



Western blot analysis of BRAT1 in HCT116, HeLa lysates using BRAT1 antibody.