

BRAT1 RABBIT MAB

Cat.#: N261933

Product Name: Anti-BRAT1 Rabbit Monoclonal Antibody

Synonyms: BRCA1-associated ATM activator 1; BRCA1-associated protein required for ATM activation protein 1

UNIPROT ID: Q6PJG6

Background: Involved in DNA damage response; activates kinases ATM, SMC1A and PRKDC by modulating their phosphorylation status following ionizing radiation (IR) stress (PubMed:16452482, PubMed:22977523). Plays a role in regulating mitochondrial function and cell proliferation (PubMed:25070371). Required for protein stability of MTOR and MTOR-related proteins, and cell cycle progress by growth factors (PubMed:25657994).

Immunogen: Recombinant protein of human BRAT1

Applications: WB, ICC/IF, IP

Recommended Dilutions: WB: 1/500-1/1000 IF: 1/50-1/200 IP: 1/20

Host Species: Rabbit

Clonality: Rabbit Monoclonal

Clone ID: R02-4D9

MW: Calculated MW: 88 kDa; Observed MW: 88 kDa

Isotype: IgG

Purification: Affinity Purified

Species Reactivity: Human

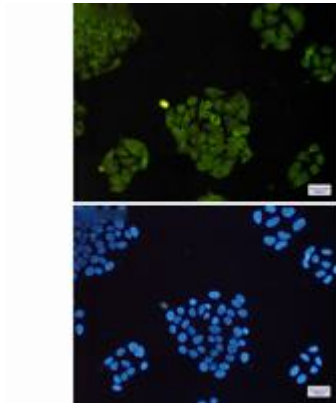
Conjugation: Unconjugated

Modification: Unmodified

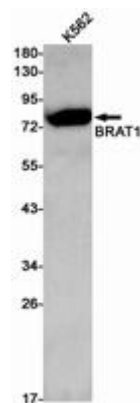
Constituents: PBS (without Mg²⁺ and Ca²⁺), pH 7.3 containing 50% glycerol, 0.5% BSA and 0.02% sodium azide

Research Areas: Epigenetics and Nuclear Signaling

Storage & Shipping: Store at -20°C. Avoid repeated freezing and thawing



Immunocytochemistry analysis of BRAT1 (green) in HeLa using BRAT1 antibody, and DAPI (blue)



Western blot analysis of BRAT1 in K562 lysates using BRAT1 antibody.