

BRG1 RABBIT MAB

Cat.#: N261937

Product Name: Anti-BRG1 Rabbit Monoclonal Antibody

Synonyms: Brg1; BAF190A; SWI/SNF; HPI-BP72; SNF2beta; b2b692Clo; b2b508.1Clo

UNIPROT ID: Q3TKT4

Background: Involved in transcriptional activation and repression of select genes by chromatin remodeling (alteration of DNA-nucleosome topology). Component of SWI/SNF chromatin remodeling complexes that carry out key enzymatic activities, changing chromatin structure by altering DNA-histone contacts within a nucleosome in an ATP-dependent manner.

Immunogen: A synthetic peptide of mouse BRG1

Applications: WB,IHC-F,IHC-P,ICC/IF,IP,ChIP

Recommended Dilutions: WB: 1/500-1/1000 IHC: 1/50-1/100 IF: 1/50-1/200 IP: 1/20 ChIP: 1/20

Host Species: Rabbit

Clonality: Rabbit Monoclonal

Clone ID: R07-4B7

MW: Calculated MW: 181 kDa; Observed MW: 220 kDa

Isotype: IgG

Purification: Affinity Purified

Species Reactivity: Human,Mouse,Rat

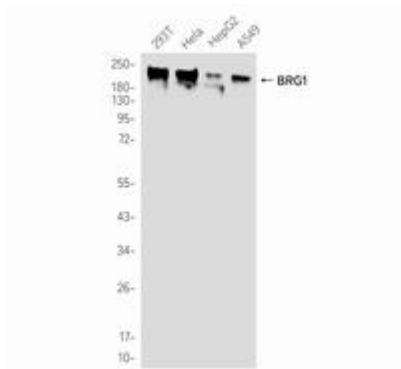
Conjugation: Unconjugated

Modification: Unmodified

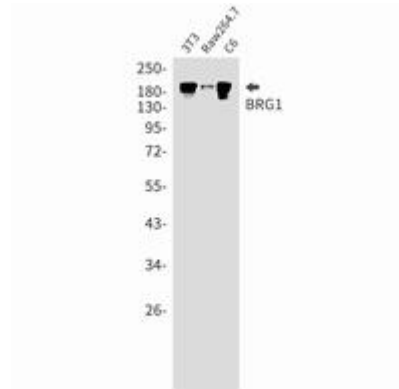
Constituents: PBS (without Mg²⁺ and Ca²⁺), pH 7.3 containing 50% glycerol, 0.5% BSA and 0.02% sodium azide

Research Areas: Neuroscience,Neural progenitor cells

Storage & Shipping: Store at -20°C. Avoid repeated freezing and thawing



Western blot analysis of BRG1 in 293T, Hela, HepG2, A549 lysates using BRG1 antibody.



Western blot analysis of BRG1 in 3T3, Raw264.7, C6 lysates using BRG1 antibody.