

BRINP1 RABBIT PAB

Cat.#: S217341

Product Name: Anti-BRINP1 Rabbit Polyclonal Antibody

Synonyms: DBC1; FAM5A; DBCCR1

UNIPROT ID: O60477 (Gene Accession - BC021560)

Background: This gene is located within a chromosomal region that shows loss of heterozygosity in some bladder cancers. It contains a 5' CpG island that may be a frequent target of hypermethylation, and it may undergo hypermethylation-based silencing in some bladder cancers.

Immunogen: Fusion protein of human BRINP1

Applications: ELISA, WB, IHC

Recommended Dilutions: IHC: 50-200;WB: 1000-5000;ELISA: 5000-10000

Host Species: Rabbit

Clonality: Rabbit Polyclonal

Isotype: Immunogen-specific rabbit IgG

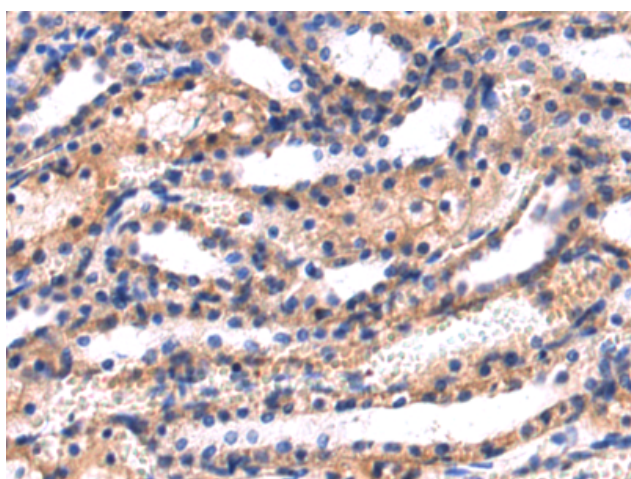
Purification: Antigen affinity purification

Species Reactivity: Human, Mouse, Rat

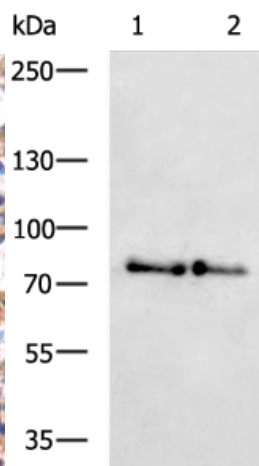
Constituents: PBS (without Mg²⁺ and Ca²⁺), pH 7.4, 150 mM NaCl, 0.05% Sodium Azide and 40% glycerol

Research Areas: Cancer

Storage & Shipping: Store at -20°C. Avoid repeated freezing and thawing



Immunohistochemistry analysis of paraffin-embedded Human heart tissue using 217341(BRINP1 Antibody) at a dilution of 1/60(Cytoplasm).



Gel: 6%SDS-PAGE, Lysate: 40 µg;
Lane 1-2: 293T and MCF7 cell lysates;
Primary antibody: 217341(BRINP1 Antibody) at dilution 1/1000;
Secondary antibody: HRP-conjugated Goat anti rabbit IgG at 1/5000 dilution;
Exposure time: 90 seconds