

BSG RABBIT PAB

Cat.#: S217252

Product Name: Anti-BSG Rabbit Polyclonal Antibody

Synonyms: M6; OK; 5F7; TCSF; CD147; EMMPRIN

UNIPROT ID: P35613 (Gene Accession - BC009040)

Background: The protein encoded by this gene is a plasma membrane protein that is important in spermatogenesis, embryo implantation, neural network formation, and tumor progression. The encoded protein is also a member of the immunoglobulin superfamily. Multiple transcript variants encoding different isoforms have been found for this gene.

Immunogen: Fusion protein of human BSG

Applications: ELISA, WB, IHC

Recommended Dilutions: IHC: 50-200;WB: 500-2000;ELISA: 2000-5000

Host Species: Rabbit

Clonality: Rabbit Polyclonal

Isotype: Immunogen-specific rabbit IgG

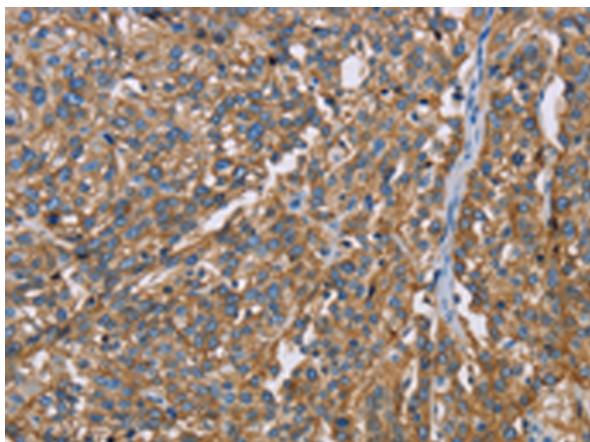
Purification: Antigen affinity purification

Species Reactivity: Human

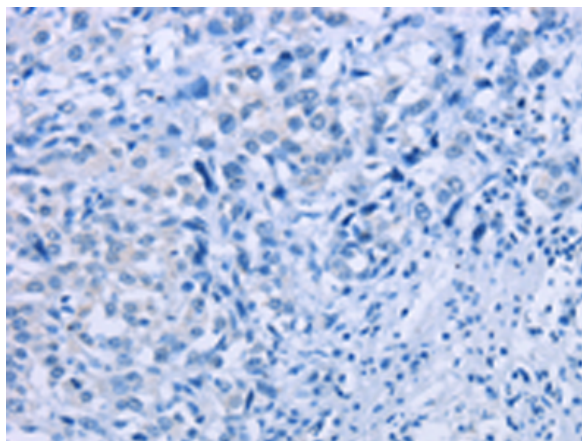
Constituents: PBS (without Mg²⁺ and Ca²⁺), pH 7.4, 150 mM NaCl, 0.05% Sodium Azide and 40% glycerol

Research Areas: Signal Transduction, Cancer, Metabolism, Neuroscience, Cardiovascular, Immunology

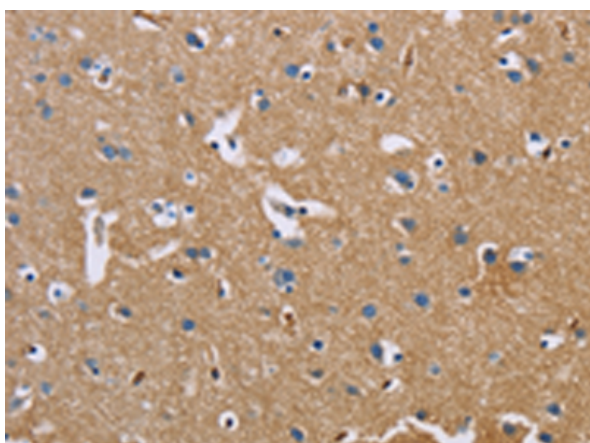
Storage & Shipping: Store at -20°C. Avoid repeated freezing and thawing



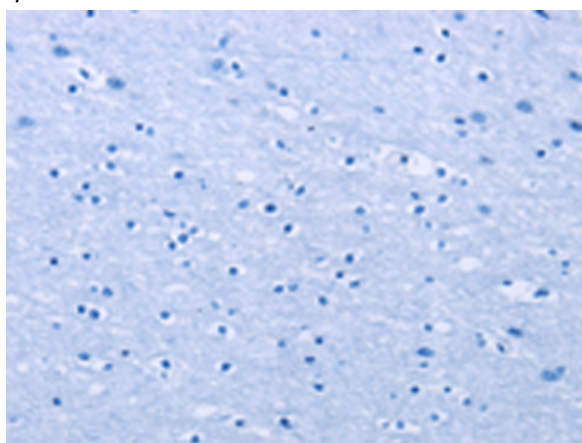
Immunohistochemistry analysis of paraffin embedded Human esophagus cancer tissue using 217252(BSG Antibody) at a dilution of 1/60(Cell membrane and Cytoplasm).



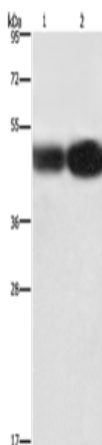
In comparison with the IHC on the left, the same paraffin-embedded Human esophagus cancer tissue is first treated with the fusion protein and then with 217252(Anti-BSG Antibody) at dilution 1/60.



The image on the left is immunohistochemistry of paraffin-embedded Human brain tissue using 217252(Anti-BSG Antibody) at a dilution of 1/60.



In comparison with the IHC on the left, the same paraffin-embedded Human brain tissue is first treated with fusion protein and then with D222048(Anti-BSG Antibody) at dilution 1/60.



Gel: 8%SDS-PAGE, Lysate: 40 µg;
Lane 1-2: A549 cells, 231 cells;
Primary antibody: 217252(BSG Antibody) at dilution 1/430;
Secondary antibody: Goat anti rabbit IgG at 1/8000 dilution;
Exposure time: 12 seconds



Product Description

Pioneering GTPase and Oncogene Product Development since 2010
