

BSPRY RABBIT PAB

Cat.#: S221625

Product Name: Anti-BSPRY Rabbit Polyclonal Antibody

Synonyms:

UNIPROT ID: Q5W0U4 (Gene Accession - NP_060158)

Background: BSPRY (B-box and SPRY domain containing) is a 402 amino acid protein that localizes to both the membrane and the cytoplasm and contains one B box-type zinc finger and one B30.2/SPRY domain. Existing as two alternatively spliced isoforms, BSPRY interacts with TRPV5 and TRPV6 and is thought to regulate the transport of calcium across the epithelium, probably by inhibiting the activity of TRPV proteins. The gene encoding BSPRY maps to human chromosome 9, which houses over 900 genes and comprises nearly 4% of the human genome. Hereditary hemorrhagic telangiectasia, which is characterized by harmful vascular defects, and Familial dysautonomia, are both associated with chromosome 9. Notably, chromosome 9 encompasses the largest interferon family gene cluster.

Immunogen: Synthetic peptide of human BSPRY

Applications: ELISA, IHC

Recommended Dilutions: IHC: 20-100; ELISA: 5000-10000

Host Species: Rabbit

Clonality: Rabbit Polyclonal

Isotype: Immunogen-specific rabbit IgG

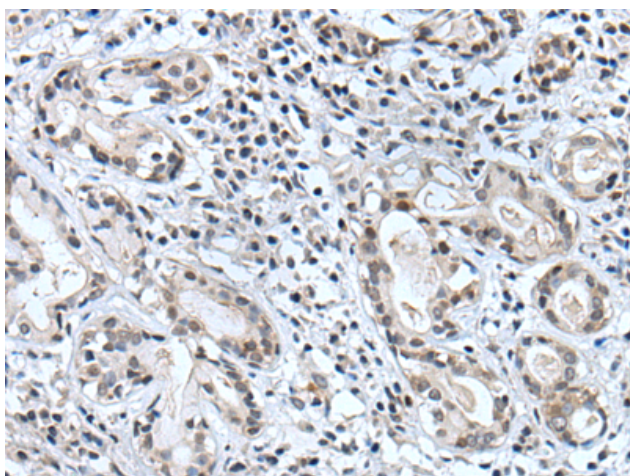
Purification: Antigen affinity purification

Species Reactivity: Human

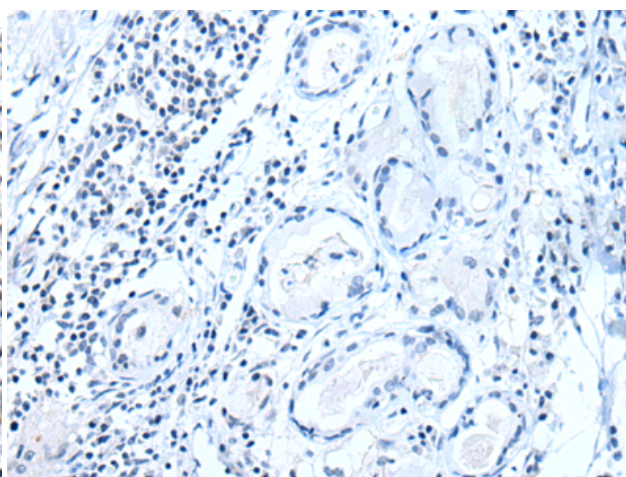
Constituents: PBS (without Mg²⁺ and Ca²⁺), pH 7.4, 150 mM NaCl, 0.05% Sodium Azide and 40% glycerol

Research Areas: Metabolism, Signal Transduction

Storage & Shipping: Store at -20°C. Avoid repeated freezing and thawing



Immunohistochemistry analysis of paraffin embedded Human lung cancer tissue using 221625(BSPRY Antibody) at a dilution of 1/35(Cell membrane).



In comparison with the IHC on the left, the same paraffin-embedded Human lung cancer tissue is first treated with the synthetic peptide and then with 221625(Anti-BSPRY Antibody) at dilution 1/35.



Product Description

Pioneering GTPase and Oncogene Product Development since 2010
