

BTBD6 RABBIT PAB

Cat.#: S221626

Product Name: Anti-BTBD6 Rabbit Polyclonal Antibody

Synonyms: BDPL

UNIPROT ID: Q96KE9 (Gene Accession - NP_150374)

Background: BTBD6 (BTB/POZ domain-containing protein 6), also known as BDPL or lens BTB domain protein, is a 410 amino acid protein that contains one BTB/POZ domain and is specifically expressed in the lens. The BTB/POZ domain mediates homomeric and heteromeric POZ-POZ interactions and is common to transcriptional regulators involved in chromatin modeling. In several BTB/POZ containing proteins, including BCL-6 and the promyelocytic leukemia zinc-finger (PLZF) oncoprotein, this domain interacts with the SMRT/N-CoR-mSin3A HDAC complex and is directly involved in repressing and silencing gene transcription. When this domain is deleted, as with the oncogenic PLZF-RAR chimera of promyelocytic leukemias, this transcriptional repression is attenuated. This suggests that BTBD6 may play a role in transcription regulation in the lens.

Immunogen: Synthetic peptide of human BTBD6

Applications: ELISA, WB, IHC

Recommended Dilutions: IHC: Oct-50;WB: 200-1000;ELISA: 5000-10000

Host Species: Rabbit

Clonality: Rabbit Polyclonal

Isotype: Immunogen-specific rabbit IgG

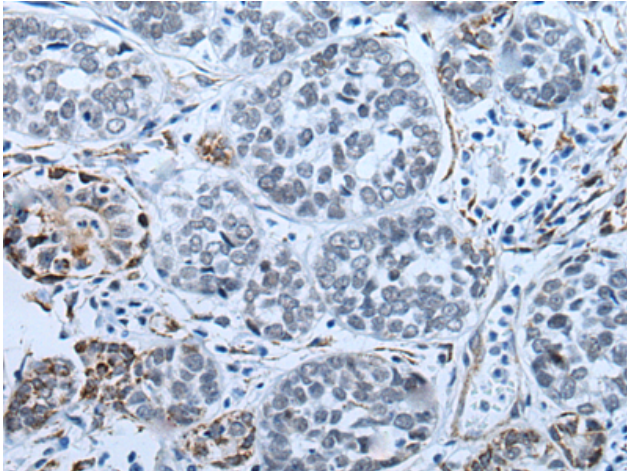
Purification: Antigen affinity purification

Species Reactivity: Human, Mouse

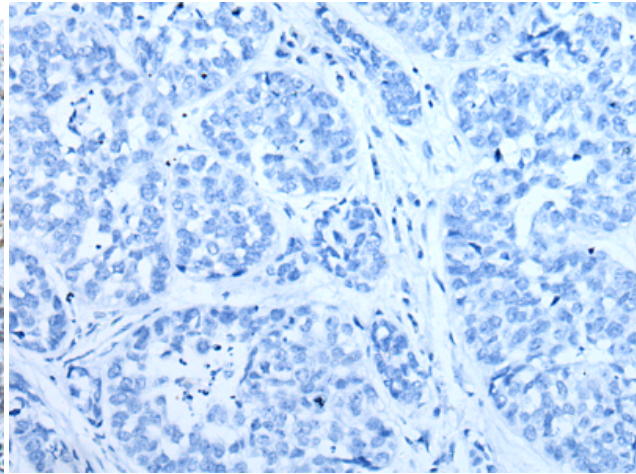
Constituents: PBS (without Mg²⁺ and Ca²⁺), pH 7.4, 150 mM NaCl, 0.05% Sodium Azide and 40% glycerol

Research Areas: Cell Biology

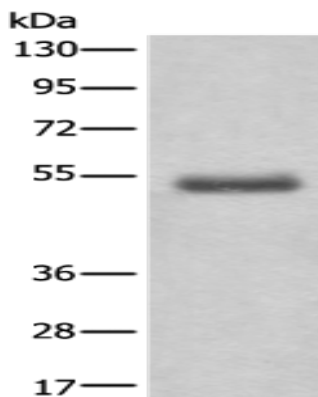
Storage & Shipping: Store at -20°C. Avoid repeated freezing and thawing



Immunohistochemistry analysis of paraffin embedded Human esophagus cancer tissue using 221626(BTBD6 Antibody) at a dilution of 1/25(Cytoplasm).



In comparison with the IHC on the left, the same paraffin-embedded Human esophagus cancer tissue is first treated with the synthetic peptide and then with 221626(Anti-BTBD6 Antibody) at dilution 1/25.



Gel: 6%SDS-PAGE, Lysate: 40 μ g;
Lane: Human gastric carcinoma tissue lysate;
Primary antibody: 221626(BTBD6 Antibody) at dilution 1/200;
Secondary antibody: Goat anti rabbit IgG at 1/8000 dilution;
Exposure time: 10 minutes