

## BTG2 RABBIT PAB

**Cat.#:** S216378

**Product Name:** Anti-BTG2 Rabbit Polyclonal Antibody

**Synonyms:** PC3; APRO1; TIS21

**UNIPROT ID:** P78543 (Gene Accession - BC105949 )

**Background:** The protein encoded by this gene is a member of the BTG/Tob family. This family has structurally related proteins that appear to have antiproliferative properties. This encoded protein is involved in the regulation of the G1/S transition of the cell cycle.

**Immunogen:** Fusion protein of human BTG2

**Applications:** ELISA, WB, IHC

**Recommended Dilutions:** IHC: 100-300;WB: 500-2000;ELISA: 5000-10000

**Host Species:** Rabbit

**Clonality:** Rabbit Polyclonal

**Isotype:** Immunogen-specific rabbit IgG

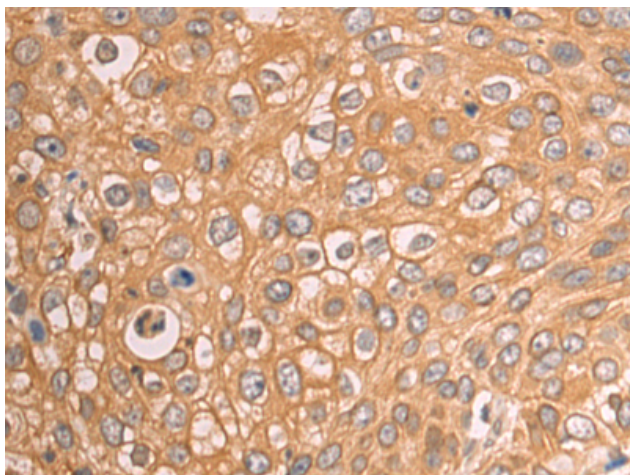
**Purification:** Antigen affinity purification

**Species Reactivity:** Human, Mouse, Rat

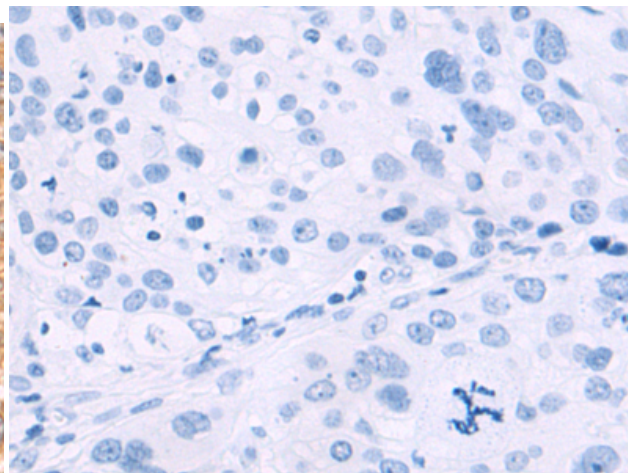
**Constituents:** PBS (without Mg<sup>2+</sup> and Ca<sup>2+</sup>), pH 7.4, 150 mM NaCl, 0.05% Sodium Azide and 40% glycerol

**Research Areas:** Epigenetics and Nuclear Signaling, Neuroscience

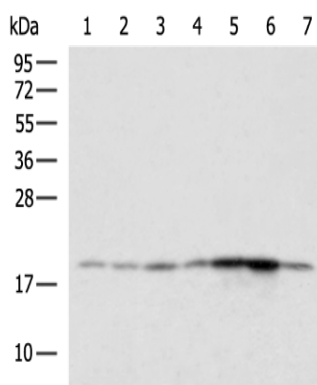
**Storage & Shipping:** Store at -20°C. Avoid repeated freezing and thawing



Immunohistochemistry analysis of paraffin embedded Human cervical cancer tissue using 216378(BTG2 Antibody) at a dilution of 1/95(Cytoplasm).



In comparison with the IHC on the left, the same paraffin-embedded Human cervical cancer tissue is first treated with the fusion protein and then with 216378(Anti-BTG2 Antibody) at dilution 1/95.



Gel: 12%SDS-PAGE, Lysate: 40 µg;  
 Lane 1-7: Mouse lung tissue, Jurkat, 293T, K562 cell, Mouse brain tissue, Mouse kidney tissue, 231 cell lysates;  
 Primary antibody: 216378(BTG2 Antibody) at dilution 1/500;  
 Secondary antibody: HRP-conjugated Goat anti rabbit IgG at 1/5000 dilution;  
 Exposure time: 1 minute