

BTG3 RABBIT PAB

Cat.#: S216377

Product Name: Anti-BTG3 Rabbit Polyclonal Antibody

Synonyms: ANA; TOB5; TOFA; APRO4; TOB55; ANA/BTG3

UNIPROT ID: Q14201 (Gene Accession - BC011957)

Background: The protein encoded by this gene is a member of the BTG/Tob family. This family has structurally related proteins that appear to have antiproliferative properties. This encoded protein might play a role in neurogenesis in the central nervous system. Two transcript variants encoding different isoforms have been found for this gene.

Immunogen: Fusion protein of human BTG3

Applications: ELISA, WB, IHC

Recommended Dilutions: IHC: 100-200;WB: 1000-5000;ELISA: 5000-10000

Host Species: Rabbit

Clonality: Rabbit Polyclonal

Isotype: Immunogen-specific rabbit IgG

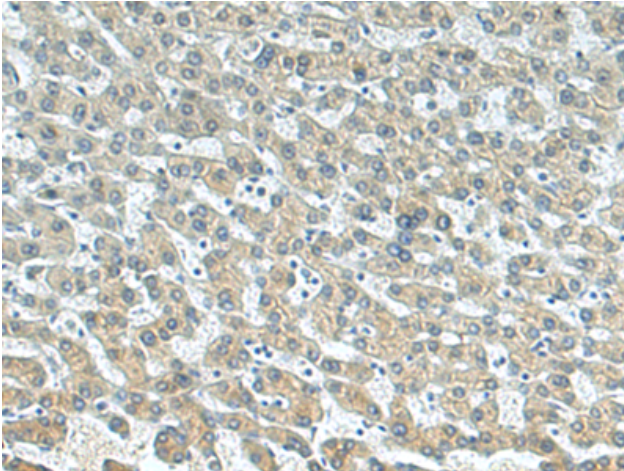
Purification: Antigen affinity purification

Species Reactivity: Human, Mouse

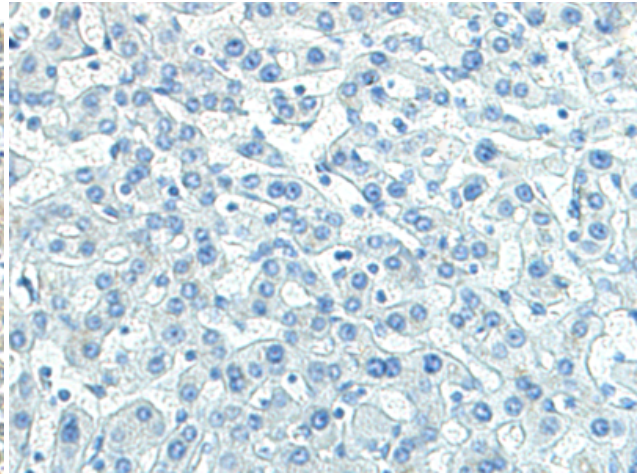
Constituents: PBS (without Mg²⁺ and Ca²⁺), pH 7.4, 150 mM NaCl, 0.05% Sodium Azide and 40% glycerol

Research Areas: Cancer

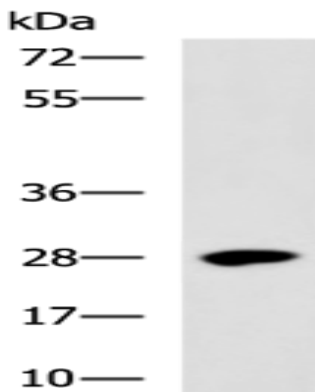
Storage & Shipping: Store at -20°C. Avoid repeated freezing and thawing



Immunohistochemistry analysis of paraffin embedded Human liver cancer tissue using 216377(BTG3 Antibody) at a dilution of 1/140(Cytoplasm).



In comparison with the IHC on the left, the same paraffin-embedded Human liver cancer tissue is first treated with the fusion protein and then with 216377(Anti-BTG3 Antibody) at dilution 1/140.



Gel: 8%SDS-PAGE, Lysate: 40 μ g;
Lane: Mouse testis tissue lysate;
Primary antibody: 216377(BTG3 Antibody) at dilution 1/1000;
Secondary antibody: HRP-conjugated Goat anti rabbit IgG at 1/5000 dilution;
Exposure time: 2 minutes