

BTG4 RABBIT PAB

Cat.#: S216376

Product Name: Anti-BTG4 Rabbit Polyclonal Antibody

Synonyms: PC3B

UNIPROT ID: Q9NY30 (Gene Accession - BC031045)

Background: The protein encoded by this gene is a member of the BTG/Tob family. This family has structurally related proteins that appear to have antiproliferative properties. This encoded protein can induce G1 arrest in the cell cycle.

Immunogen: Fusion protein of human BTG4

Applications: ELISA, IHC

Recommended Dilutions: IHC: 30-150; ELISA: 5000-10000

Host Species: Rabbit

Clonality: Rabbit Polyclonal

Isotype: Immunogen-specific rabbit IgG

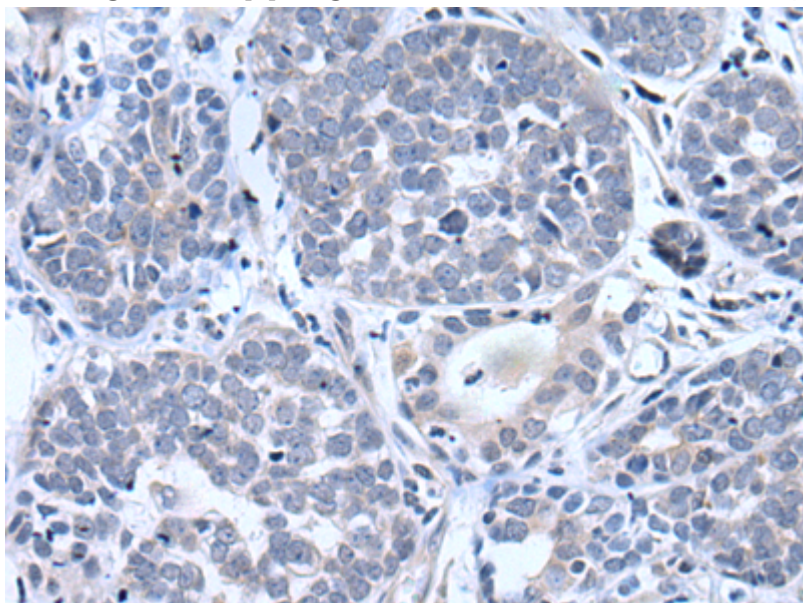
Purification: Antigen affinity purification

Species Reactivity: Human

Constituents: PBS (without Mg²⁺ and Ca²⁺), pH 7.4, 150 mM NaCl, 0.05% Sodium Azide and 40% glycerol

Research Areas: Cancer

Storage & Shipping: Store at -20°C. Avoid repeated freezing and thawing



Immunohistochemistry analysis of paraffin-embedded Human esophagus cancer tissue using 216376(BTG4 Antibody) at a dilution of 1/55(Cytoplasm).



Product Description

Pioneering GTPase and Oncogene Product Development since 2010
