

BTN1A1 RABBIT PAB

Cat.#: S218379

Product Name: Anti-BTN1A1 Rabbit Polyclonal Antibody

Synonyms: BT; BTN; BTN1

UNIPROT ID: Q13410 (Gene Accession - BC096312)

Background: Butyrophilin is the major protein associated with fat droplets in the milk. It is a member of the immunoglobulin superfamily. It may have a cell surface receptor function. The human butyrophilin gene is localized in the major histocompatibility complex (MHC) class I region of 6p and may have arisen relatively recently in evolution by the shuffling of exons between 2 ancestral gene families.

Immunogen: Fusion protein of human BTN1A1

Applications: ELISA, WB, IHC

Recommended Dilutions: IHC: 150–300;WB: 1000–5000;ELISA: 5000–10000

Host Species: Rabbit

Clonality: Rabbit Polyclonal

Isotype: Immunogen-specific rabbit IgG

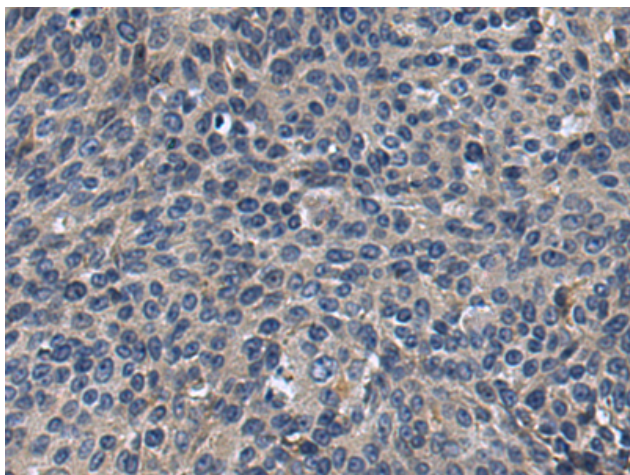
Purification: Antigen affinity purification

Species Reactivity: Human, Mouse

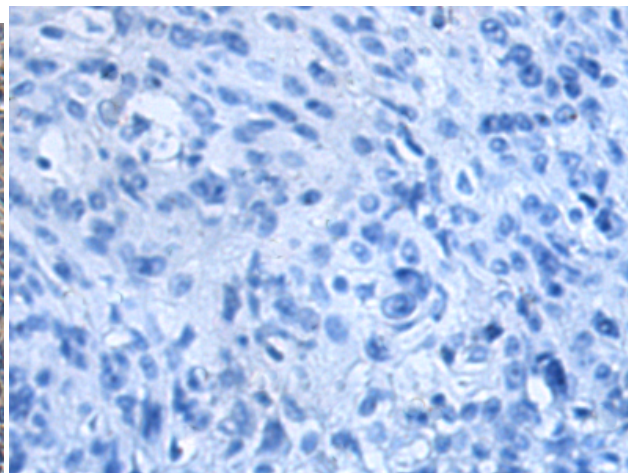
Constituents: PBS (without Mg²⁺ and Ca²⁺), pH 7.4, 150 mM NaCl, 0.05% Sodium Azide and 40% glycerol

Research Areas: Cardiovascular

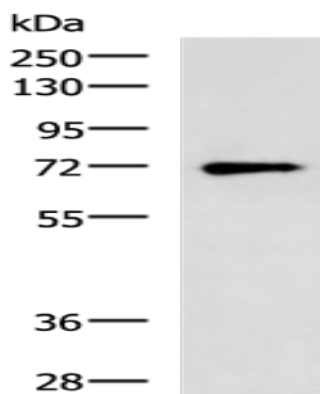
Storage & Shipping: Store at -20°C. Avoid repeated freezing and thawing



Immunohistochemistry analysis of paraffin embedded Human cervical cancer tissue using 218379(BTN1A1 Antibody) at a dilution of 1/170(Cytoplasm).



In comparison with the IHC on the left, the same paraffin-embedded Human cervical cancer tissue is first treated with the fusion protein and then with 218379(Anti-BTN1A1 Antibody) at dilution 1/170.



Gel: 8%SDS-PAGE, Lysate: 40 μ g;
Lane: HepG2 cell lysate;
Primary antibody: 218379(BTN1A1 Antibody) at dilution 1/1000;
Secondary antibody: HRP-conjugated Goat anti rabbit IgG at 1/5000 dilution;
Exposure time: 1 minute