

BTNL2 RABBIT PAB

Cat.#: S218142

Product Name: Anti-BTNL2 Rabbit Polyclonal Antibody

Synonyms: SS2; BTN7; BTL-II; HSBLMHC1

UNIPROT ID: Q9UIR0 (Gene Accession - BC127642)

Background: This gene encodes a major histocompatibility complex class II associated, type I transmembrane protein which belongs to the butyrophilin-like B7 family of immunoregulators. It is thought to be involved in immune surveillance, serving as a negative T-cell regulator by decreasing T-cell proliferation and cytokine release. The encoded protein contains an N-terminal signal peptide, two pairs of immunoglobulin-like domains, separated by a heptad peptide sequence, and a C-terminal transmembrane domain. Naturally occurring mutations in this gene are associated with sarcoidosis, rheumatoid arthritis, ulcerative colitis, inflammatory bowel disease, myositis, type 1 diabetes, systemic lupus erythematosus, acute coronary syndrome, and prostate cancer.

Immunogen: Fusion protein of human BTNL2

Applications: ELISA, WB, IHC

Recommended Dilutions: IHC: 200-400;WB: 500-2000;ELISA: 5000-10000

Host Species: Rabbit

Clonality: Rabbit Polyclonal

Isotype: Immunogen-specific rabbit IgG

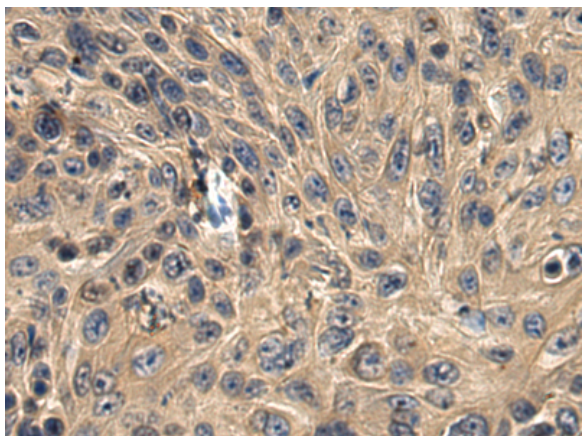
Purification: Antigen affinity purification

Species Reactivity: Human, Mouse

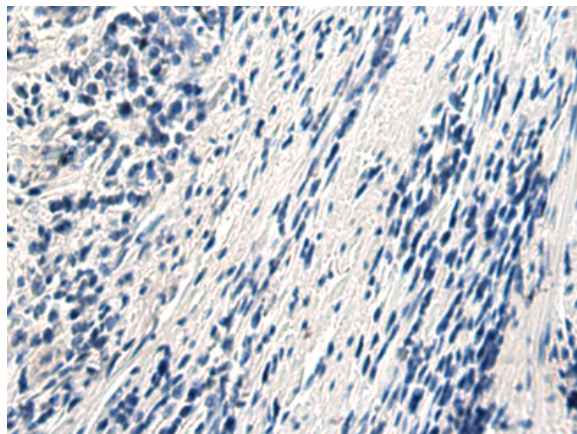
Constituents: PBS (without Mg²⁺ and Ca²⁺), pH 7.4, 150 mM NaCl, 0.05% Sodium Azide and 40% glycerol

Research Areas: Immunology

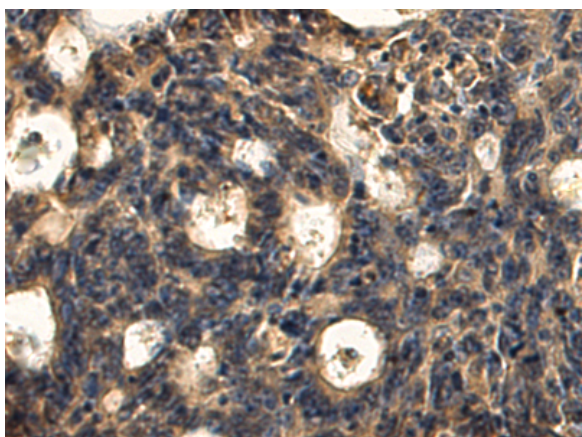
Storage & Shipping: Store at -20°C. Avoid repeated freezing and thawing



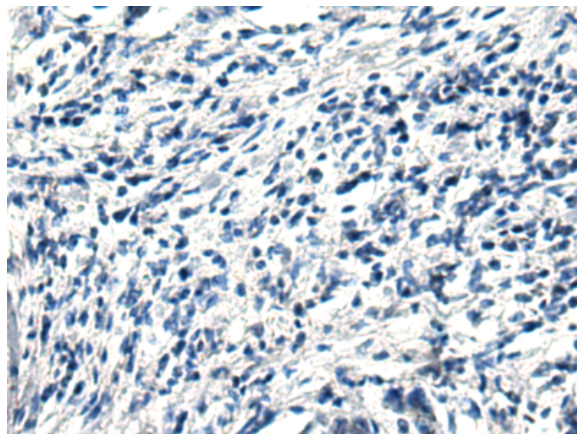
Immunohistochemistry analysis of paraffin embedded Human esophagus cancer tissue using 218142(BTNL2 Antibody) at a dilution of 1/220(Cytoplasm).



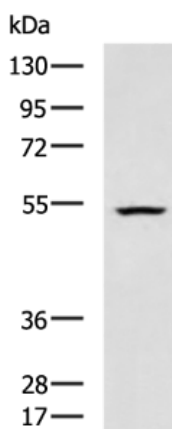
In comparison with the IHC on the left, the same paraffin-embedded Human esophagus cancer tissue is first treated with the fusion protein and then with 218142(Anti-BTNL2 Antibody) at dilution 1/220.



The image on the left is immunohistochemistry of paraffin-embedded Human colorectal cancer tissue using 218142(Anti-BTNL2 Antibody) at a dilution of 1/220.



In comparison with the IHC on the left, the same paraffin-embedded Human colorectal cancer tissue is first treated with fusion protein and then with D223807(Anti-BTNL2 Antibody) at dilution 1/220.



Gel: 8%SDS-PAGE, Lysate: 40 µg;
 Lane: Mouse kidney tissue lysate;
 Primary antibody: 218142(BTNL2 Antibody) at dilution 1/1000;
 Secondary antibody: HRP-conjugated Goat anti rabbit IgG at 1/5000 dilution;
 Exposure time: 40 seconds



Product Description

Pioneering GTPase and Oncogene Product Development since 2010
