

BTNL8 RABBIT PAB

Cat.#: S218380

Product Name: Anti-BTNL8 Rabbit Polyclonal Antibody

Synonyms: BTN9.2

UNIPROT ID: Q6UX41 (Gene Accession - BC119696)

Background: May stimulate primary immune response. Acts on T-cell stimulated sub-optimally through the TCR/CD3 complex stimulating their proliferation and cytokine production.

Immunogen: Fusion protein of human BTNL8

Applications: ELISA, IHC

Recommended Dilutions: IHC: 100-300; ELISA: 5000-10000

Host Species: Rabbit

Clonality: Rabbit Polyclonal

Isotype: Immunogen-specific rabbit IgG

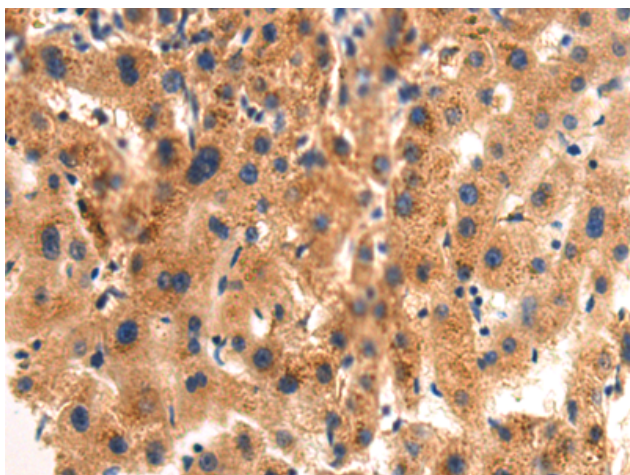
Purification: Antigen affinity purification

Species Reactivity: Human

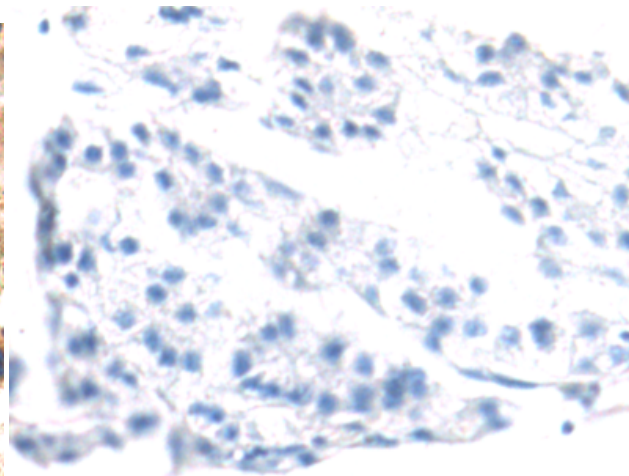
Constituents: PBS (without Mg²⁺ and Ca²⁺), pH 7.4, 150 mM NaCl, 0.05% Sodium Azide and 40% glycerol

Research Areas: Cell Biology

Storage & Shipping: Store at -20°C. Avoid repeated freezing and thawing



Immunohistochemistry analysis of paraffin embedded Human liver cancer tissue using 218380(BTNL8 Antibody) at a dilution of 1/115(Cytoplasm).



In comparison with the IHC on the left, the same paraffin-embedded Human liver cancer tissue is first treated with the fusion protein and then with 218380(Anti-BTNL8 Antibody) at dilution 1/115.