

BZW2 RABBIT PAB

Cat.#: S218692

Product Name: Anti-BZW2 Rabbit Polyclonal Antibody

Synonyms: MST017; HSPC028; MSTP017

UNIPROT ID: Q9Y6E2 (Gene Accession - BC003056)

Background: May be involved in neuronal differentiation.

Immunogen: Fusion protein of human BZW2

Applications: ELISA, IHC

Recommended Dilutions: IHC: 25-100; ELISA: 5000-10000

Host Species: Rabbit

Clonality: Rabbit Polyclonal

Isotype: Immunogen-specific rabbit IgG

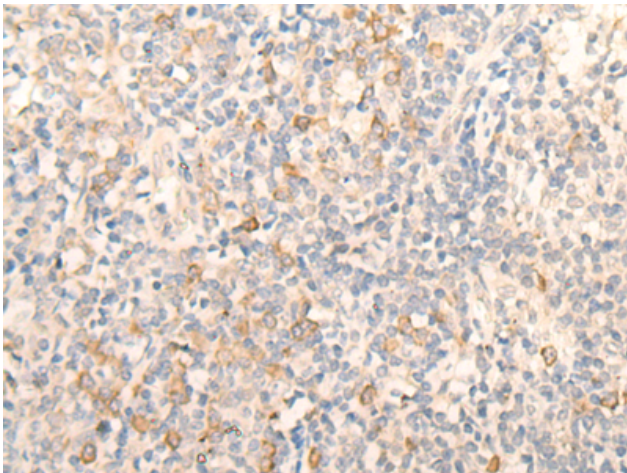
Purification: Antigen affinity purification

Species Reactivity: Human, Mouse, Rat

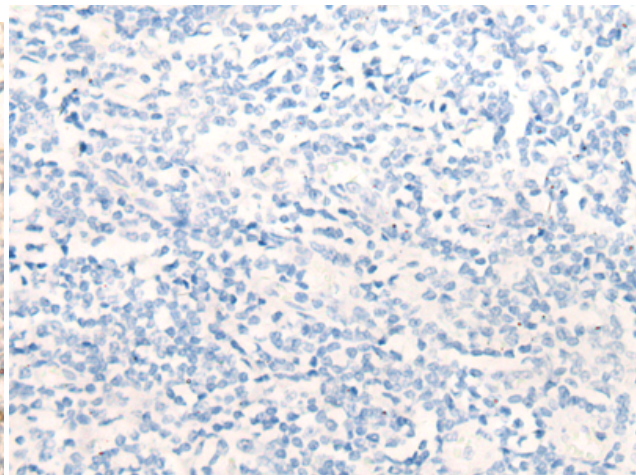
Constituents: PBS (without Mg²⁺ and Ca²⁺), pH 7.4, 150 mM NaCl, 0.05% Sodium Azide and 40% glycerol

Research Areas: Cancer, Neuroscience, Developmental Biology

Storage & Shipping: Store at -20°C. Avoid repeated freezing and thawing



Immunohistochemistry analysis of paraffin embedded Human tonsil tissue using 218692(BZW2 Antibody) at a dilution of 1/20(Cytoplasm).



In comparison with the IHC on the left, the same paraffin-embedded Human tonsil tissue is first treated with the fusion protein and then with 218692(Anti-BZW2 Antibody) at dilution 1/20.