

## C14ORF180 RABBIT PAB

**Cat.#:** S222000

**Product Name:** Anti-C14orf180 Rabbit Polyclonal Antibody

**Synonyms:** NRAC; C14orf77

**UNIPROT ID:** Q8N912 (Gene Accession - NP\_001008404 )

**Background:** C14orf180 is a multi-pass membrane protein. The function of the C14orf180 protein is not known.

**Immunogen:** Synthetic peptide of human C14orf180

**Applications:** ELISA, IHC

**Recommended Dilutions:** IHC: 25-100; ELISA: 5000-10000

**Host Species:** Rabbit

**Clonality:** Rabbit Polyclonal

**Isotype:** Immunogen-specific rabbit IgG

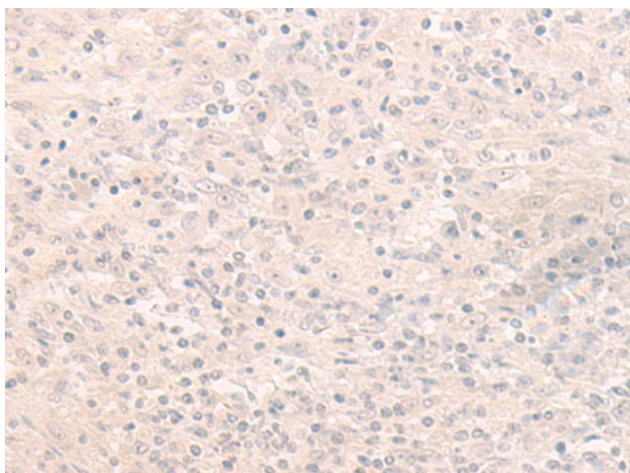
**Purification:** Antigen affinity purification

**Species Reactivity:** Human

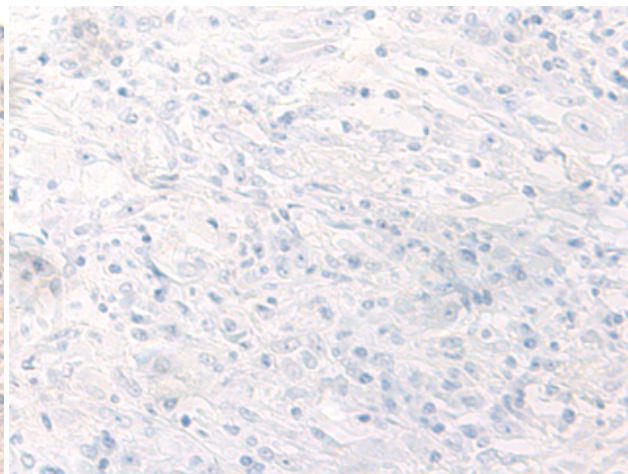
**Constituents:** PBS (without Mg<sup>2+</sup> and Ca<sup>2+</sup>), pH 7.4, 150 mM NaCl, 0.05% Sodium Azide and 40% glycerol

**Research Areas:** Cell Biology

**Storage & Shipping:** Store at -20°C. Avoid repeated freezing and thawing



Immunohistochemistry analysis of paraffin embedded Human liver cancer tissue using 222000(C14orf180 Antibody) at a dilution of 1/30(Cell membrane).



In comparison with the IHC on the left, the same paraffin-embedded Human liver cancer tissue is first treated with the synthetic peptide and then with 222000(Anti-C14orf180 Antibody) at dilution 1/30.