

C19ORF57 RABBIT PAB

Cat.#: S219064

Product Name: Anti-C19orf57 Rabbit Polyclonal Antibody

Synonyms:

UNIPROT ID: Q0VDD7 (Gene Accession - BC012945)

Background: The function of this protein remains unknown.

Immunogen: Fusion protein of human C19orf57

Applications: ELISA, WB, IHC

Recommended Dilutions: IHC: 40-200;WB: 200-1000;ELISA: 5000-10000

Host Species: Rabbit

Clonality: Rabbit Polyclonal

Isotype: Immunogen-specific rabbit IgG

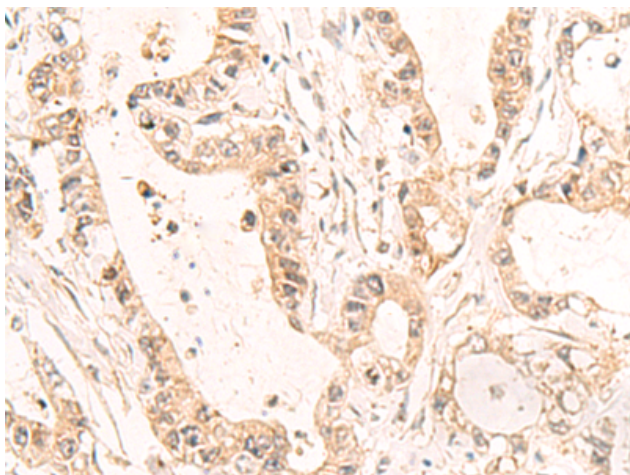
Purification: Antigen affinity purification

Species Reactivity: Human

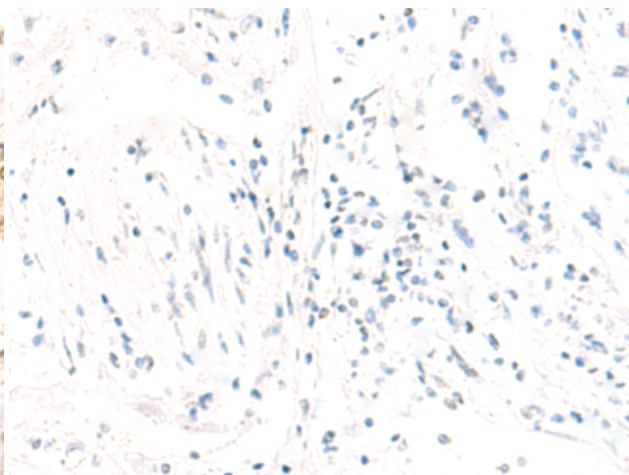
Constituents: PBS (without Mg²⁺ and Ca²⁺), pH 7.4, 150 mM NaCl, 0.05% Sodium Azide and 40% glycerol

Research Areas: Cell Biology

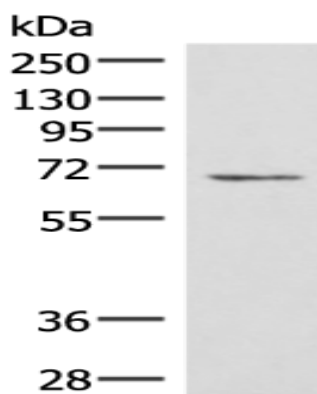
Storage & Shipping: Store at -20°C. Avoid repeated freezing and thawing



Immunohistochemistry analysis of paraffin embedded Human gastric cancer tissue using 219064(C19orf57 Antibody) at a dilution of 1/50(Cytoplasm).



In comparison with the IHC on the left, the same paraffin-embedded Human gastric cancer tissue is first treated with the fusion protein and then with 219064(Anti-C19orf57 Antibody) at dilution 1/50.



Gel: 8%SDS-PAGE, Lysate: 40 μ g;
Lane: PC3 cell lysate;
Primary antibody: 219064(C19orf57 Antibody) at dilution 1/300;
Secondary antibody: Goat anti rabbit IgG at 1/8000 dilution;
Exposure time: 20 seconds