

C3 RABBIT MAB

Cat.#: N261941

Product Name: Anti-C3 Rabbit Monoclonal Antibody

Synonyms: AHUS5; ARMD9; ASP; Complement C3; Complement factor 3; CPAMD1; HEL S 62p

UNIPROT ID: P01024

Background: Plays a central role in the activation of the complement system. Its processing by C3 convertase is the central reaction in both classical and alternative complement pathways. After activation C3b can bind covalently, via its reactive thioester, to cell surface carbohydrates or immune aggregates.

Immunogen: A synthetic peptide of human C3

Applications: WB,IHC-P

Recommended Dilutions: WB: 1/500-1/1000 IHC: 1/50-1/100

Host Species: Rabbit

Clonality: Rabbit Monoclonal

Clone ID: R06-2C2

MW: Calculated MW: 187 kDa; Observed MW: 187 kDa

Isotype: IgG

Purification: Affinity Purified

Species Reactivity: Human

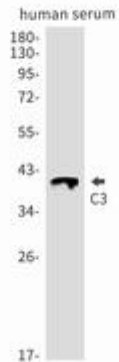
Conjugation: Unconjugated

Modification: Unmodified

Constituents: PBS (without Mg²⁺ and Ca²⁺), pH 7.3 containing 50% glycerol, 0.5% BSA and 0.02% sodium azide

Research Areas: Immunology

Storage & Shipping: Store at -20°C. Avoid repeated freezing and thawing



Western blot analysis of C3 in Human serum lysates using C3 antibody.