

C4BPA RABBIT PAB

Cat.#: S221655

Product Name: Anti-C4BPA Rabbit Polyclonal Antibody

Synonyms: PRP; C4BP

UNIPROT ID: P04003 (Gene Accession - NP_000706)

Background: This gene encodes a member of a superfamily of proteins composed predominantly of tandemly arrayed short consensus repeats of approximately 60 amino acids. Along with a single, unique beta-chain, seven identical alpha-chains encoded by this gene assemble into the predominant isoform of C4b-binding protein, a multimeric protein that controls activation of the complement cascade through the classical pathway. The genes encoding both alpha and beta chains are located adjacent to each other on human chromosome 1 in the regulator of complement activation gene cluster. Two pseudogenes of this gene are also found in the cluster.

Immunogen: Synthetic peptide of human C4BPA

Applications: ELISA, IHC

Recommended Dilutions: IHC: Oct-50; ELISA: 5000-10000

Host Species: Rabbit

Clonality: Rabbit Polyclonal

Isotype: Immunogen-specific rabbit IgG

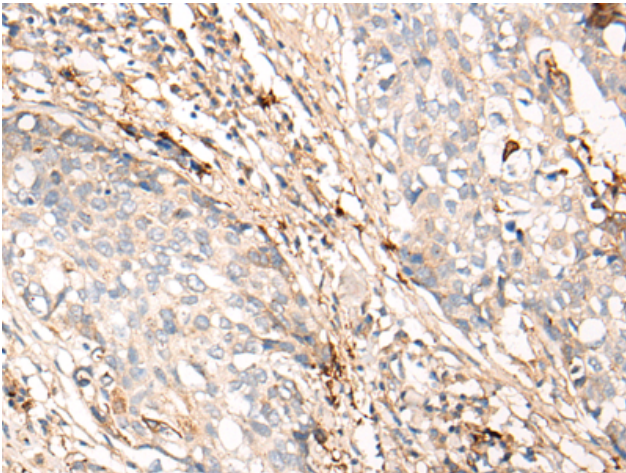
Purification: Antigen affinity purification

Species Reactivity: Human

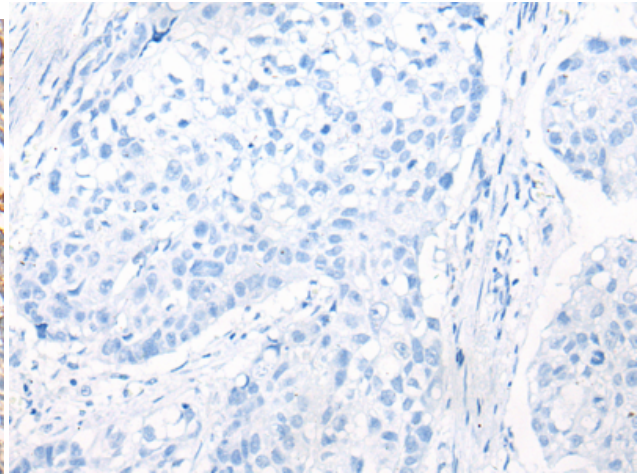
Constituents: PBS (without Mg²⁺ and Ca²⁺), pH 7.4, 150 mM NaCl, 0.05% Sodium Azide and 40% glycerol

Research Areas: Immunology

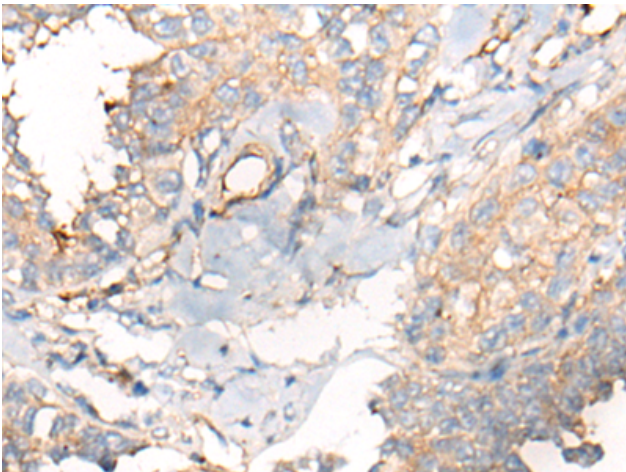
Storage & Shipping: Store at -20°C. Avoid repeated freezing and thawing



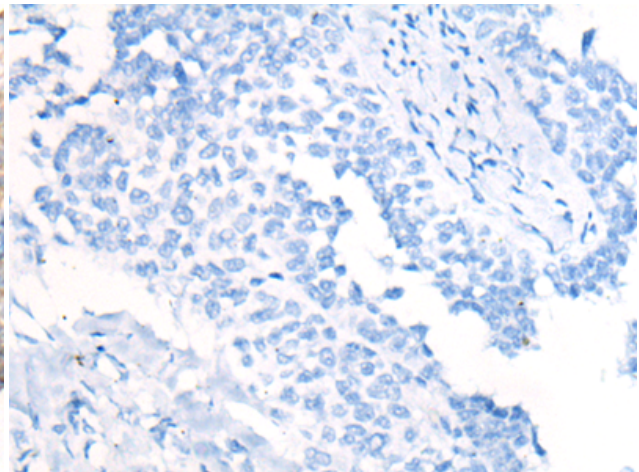
Immunohistochemistry analysis of paraffin embedded Human lung cancer tissue using 221655(C4BPA Antibody) at a dilution of 1/30(Secreted).



In comparison with the IHC on the left, the same paraffin-embedded Human lung cancer tissue is first treated with the synthetic peptide and then with 221655(Anti-C4BPA Antibody) at dilution 1/30.



The image on the left is immunohistochemistry of paraffin-embedded Human ovarian cancer tissue using 221655(Anti-C4BPA Antibody) at a dilution of 1/30.



In comparison with the IHC on the left, the same paraffin-embedded Human ovarian cancer tissue is first treated with synthetic peptide and then with D263350(Anti-C4BPA Antibody) at dilution 1/30.