

## C7 RABBIT PAB

**Cat.#:** N226013

**Product Name:** Anti-C7 Rabbit pAb

**Synonyms:** Complement component C7

**UNIPROT ID:** P10643

**Background:** Constituent of the membrane attack complex (MAC) that plays a key role in the innate and adaptive immune response by forming pores in the plasma membrane of target cells.

**Immunogen:** A synthetic peptide of human C7

**Applications:** WB,IHC-P,FC,IP

**Recommended Dilutions:** WB: 1/500-1/1000 IHC: 1/50-1/100 IP: 1/20 FC: 1/50-1/100

**Host Species:** Rabbit

**Clonality:** Rabbit Polyclonal

**Clone ID:** -

**MW:** Calculated MW: 94 kDa; Observed MW: 94 kDa

**Isotype:** IgG

**Purification:** Affinity Purified

**Species Reactivity:** Human,Mouse,Rat

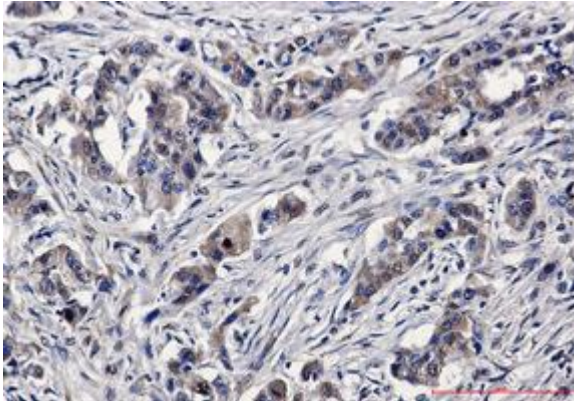
**Conjugation:** Unconjugated

**Modification:** Unmodified

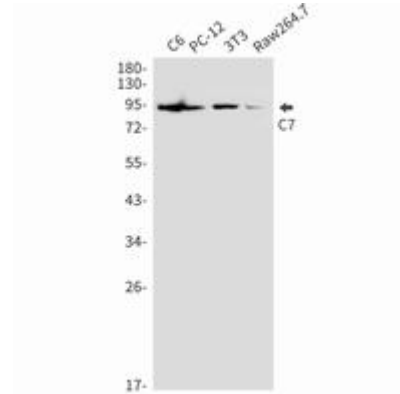
**Constituents:** PBS (without Mg<sup>2+</sup> and Ca<sup>2+</sup>), pH 7.3 containing 50% glycerol, 0.5% BSA and 0.02% sodium azide

**Research Areas:** Immunology

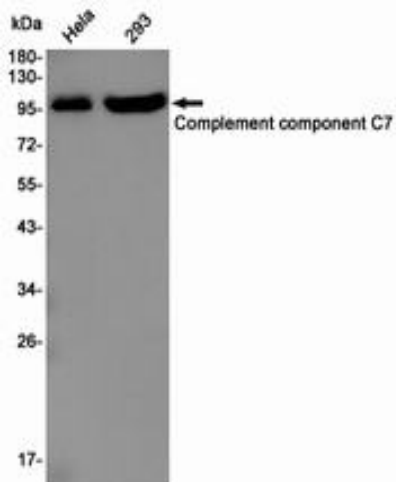
**Storage & Shipping:** Store at -20°C. Avoid repeated freezing and thawing



Immunohistochemistry analysis of paraffin-embedded Human lung cancer using C7 antibody. High-pressure and temperature Sodium Citrate pH 6.0 was used for antigen retrieval.



Western blot analysis of C7 in C6, PC-12, 3T3, Raw264.7 lysates using C7 antibody.



Western blot analysis of C7 in HeLa, 293 lysates using C7 antibody.