

C8G RABBIT PAB

Cat.#: S218113

Product Name: Anti-C8G Rabbit Polyclonal Antibody

Synonyms: C8C

UNIPROT ID: P07360 (Gene Accession - BC113626)

Background: The protein encoded by this gene belongs to the lipocalin family. It is one of the three subunits that constitutes complement component 8 (C8), which is composed of a disulfide-linked C8 alpha-gamma heterodimer and a non-covalently associated C8 beta chain. C8 participates in the formation of the membrane attack complex (MAC) on bacterial cell membranes. While subunits alpha and beta play a role in complement-mediated bacterial killing, the gamma subunit is not required for the bactericidal activity.

Immunogen: Full length fusion protein

Applications: ELISA, WB, IHC

Recommended Dilutions: IHC: 25-100;WB: 200-1000;ELISA: 5000-10000

Host Species: Rabbit

Clonality: Rabbit Polyclonal

Isotype: Immunogen-specific rabbit IgG

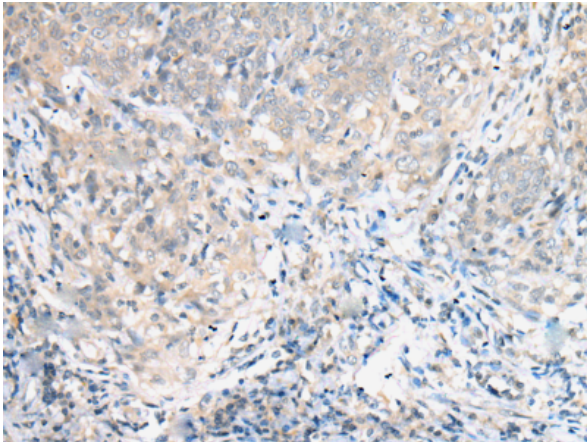
Purification: Antigen affinity purification

Species Reactivity: Human

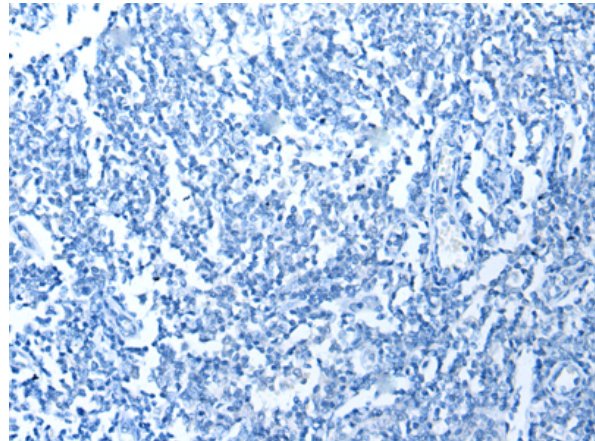
Constituents: PBS (without Mg²⁺ and Ca²⁺), pH 7.4, 150 mM NaCl, 0.05% Sodium Azide and 40% glycerol

Research Areas: Immunology

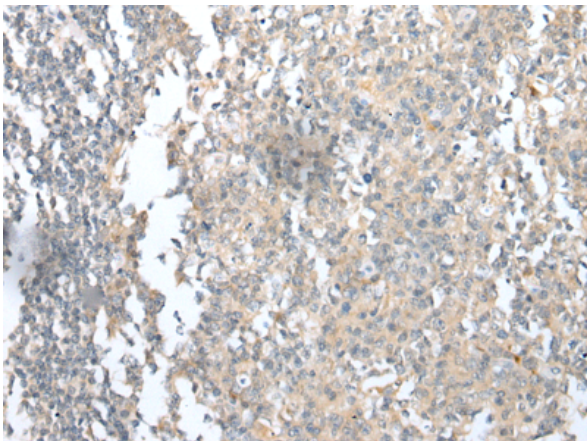
Storage & Shipping: Store at -20°C. Avoid repeated freezing and thawing



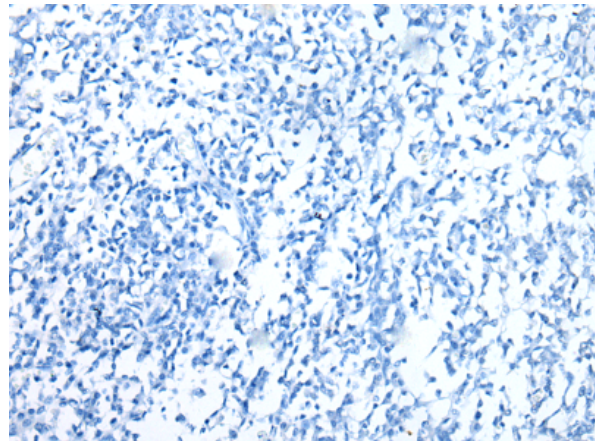
Immunohistochemistry analysis of paraffin embedded Human cervical cancer tissue using 218113(C8G Antibody) at a dilution of 1/25(Cytoplasm).



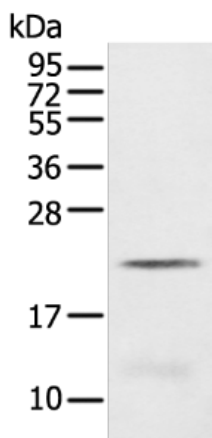
In comparison with the IHC on the left, the same paraffin-embedded Human cervical cancer tissue is first treated with the fusion protein and then with 218113(Anti-C8G Antibody) at dilution 1/25.



The image on the left is immunohistochemistry of paraffin-embedded Human tonsil tissue using 218113(Anti-C8G Antibody) at a dilution of 1/25.



In comparison with the IHC on the left, the same paraffin-embedded Human tonsil tissue is first treated with fusion protein and then with D223748(Anti-C8G Antibody) at dilution 1/25.



Gel: 12%SDS-PAGE, Lysate: 40 µg;
Lane: Human colorectal cancer tissue;
Primary antibody: 218113(C8G Antibody) at dilution 1/200;
Secondary antibody: Goat anti rabbit IgG at 1/8000 dilution;
Exposure time: 10 seconds



Product Description

Pioneering GTPase and Oncogene Product Development since 2010
