

C8ORF44 RABBIT PAB

Cat.#: S212516

Product Name: Anti-C8orf44 Rabbit Polyclonal Antibody

Synonyms:

UNIPROT ID: Q96CB5 (Gene Accession - BC014448)

Background: The function of this protein remains unknown.

Immunogen: Fusion protein of human C8orf44

Applications: ELISA, WB, IHC

Recommended Dilutions: IHC: 40-200;WB: 200-1000;ELISA: 5000-10000

Host Species: Rabbit

Clonality: Rabbit Polyclonal

Isotype: Immunogen-specific rabbit IgG

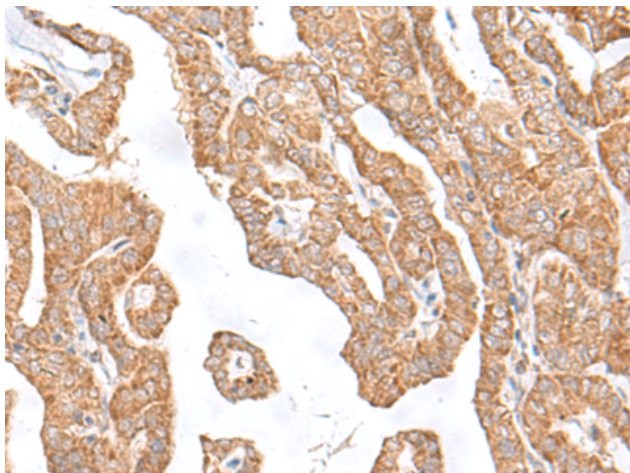
Purification: Antigen affinity purification

Species Reactivity: Human

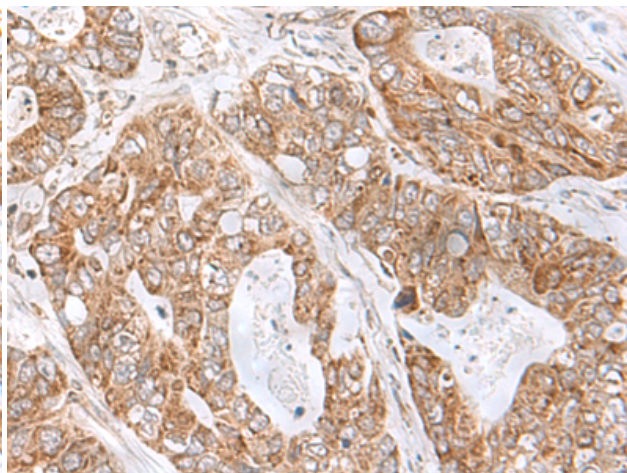
Constituents: PBS (without Mg²⁺ and Ca²⁺), pH 7.4, 150 mM NaCl, 0.05% Sodium Azide and 40% glycerol

Research Areas: Cell Biology

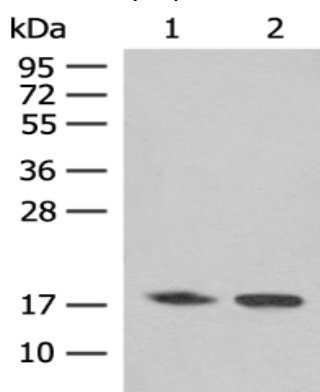
Storage & Shipping: Store at -20°C. Avoid repeated freezing and thawing



Immunohistochemistry analysis of paraffin-embedded Human thyroid cancer tissue using 212516(C8orf44 Antibody) at a dilution of 1/35(Cytoplasm).



Immunohistochemistry analysis of paraffin-embedded Human gastric cancer tissue using 212516(Anti-C8orf44 Antibody) at a dilution of 1/35.



Gel: 12%SDS-PAGE, Lysate: 40 μ g;
Lane 1-2: K562 cell, Human kidney tissue lysates;
Primary antibody: 212516(C8orf44 Antibody) at dilution 1/250;
Secondary antibody: Goat anti rabbit IgG at 1/8000 dilution;
Exposure time: 1 minute