

## C9ORF167 RABBIT MAB

**Cat.#:** N261945

**Product Name:** Anti-C9orf167 Rabbit Monoclonal Antibody

**Synonyms:** C9orf167

**UNIPROT ID:** Q9NXH8

**Background:** Predicted to enable ATP binding activity. Predicted to be located in extracellular region and platelet alpha granule lumen. Predicted to be active in endoplasmic reticulum lumen and nuclear envelope.

**Immunogen:** Recombinant protein of human C9orf167

**Applications:** WB,IP

**Recommended Dilutions:** WB: 1/500-1/1000 IP: 1/20

**Host Species:** Rabbit

**Clonality:** Rabbit Monoclonal

**Clone ID:** R03-5E4

**MW:** Calculated MW: 47 kDa; Observed MW: 47 kDa

**Isotype:** IgG

**Purification:** Affinity Purified

**Species Reactivity:** Human

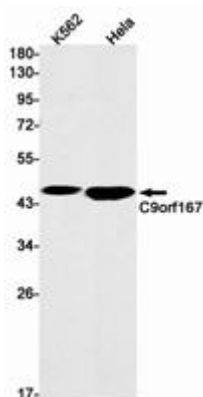
**Conjugation:** Unconjugated

**Modification:** Unmodified

**Constituents:** PBS (without Mg<sup>2+</sup> and Ca<sup>2+</sup>), pH 7.3 containing 50% glycerol, 0.5% BSA and 0.02% sodium azide

**Research Areas:** Cell Biology

**Storage & Shipping:** Store at -20°C. Avoid repeated freezing and thawing



Western blot analysis of C9orf167 in K562, HeLa lysates using C9orf167 antibody.



# Product Description

Pioneering GTPase and Oncogene Product Development since 2010

---