

## CA3 RABBIT PAB

**Cat.#:** S216390

**Product Name:** Anti-CA3 Rabbit Polyclonal Antibody

**Synonyms:** Car3; CAIII

**UNIPROT ID:** P07451 (Gene Accession - BC004897 )

**Background:** Carbonic anhydrase III (CAIII) is a member of a multigene family (at least six separate genes are known) that encodes carbonic anhydrase isozymes. These carbonic anhydrases are a class of metalloenzymes that catalyze the reversible hydration of carbon dioxide and are differentially expressed in a number of cell types. The expression of the CA3 gene is strictly tissue specific and present at high levels in skeletal muscle and much lower levels in cardiac and smooth muscle. A proportion of carriers of Duchenne muscle dystrophy have a higher CA3 level than normal. The gene spans 10.3 kb and contains seven exons and six introns.

**Immunogen:** Fusion protein of human CA3

**Applications:** ELISA, WB, IHC

**Recommended Dilutions:** IHC: 100-200;WB: 1000-5000;ELISA: 5000-10000

**Host Species:** Rabbit

**Clonality:** Rabbit Polyclonal

**Isotype:** Immunogen-specific rabbit IgG

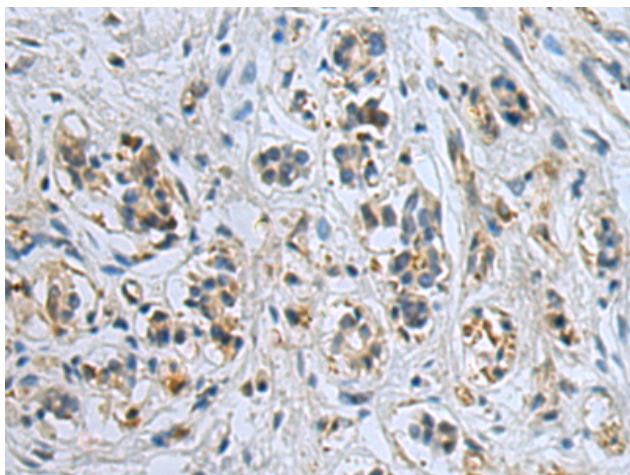
**Purification:** Antigen affinity purification

**Species Reactivity:** Human, Mouse, Rat

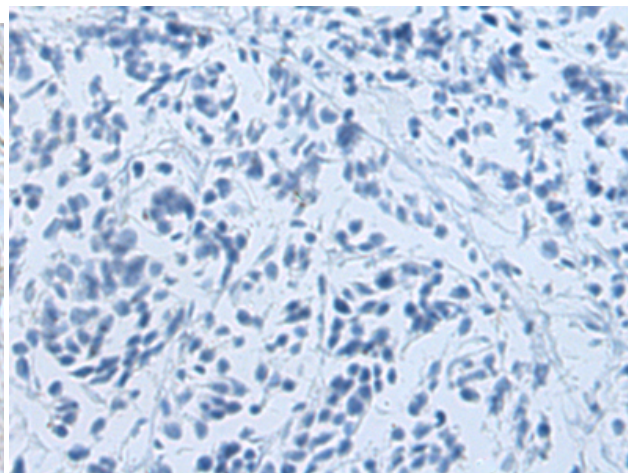
**Constituents:** PBS (without Mg<sup>2+</sup> and Ca<sup>2+</sup>), pH 7.4, 150 mM NaCl, 0.05% Sodium Azide and 40% glycerol

**Research Areas:** Cell Biology, Cardiovascular

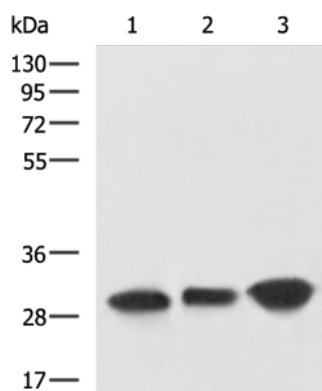
**Storage & Shipping:** Store at -20°C. Avoid repeated freezing and thawing



Immunohistochemistry analysis of paraffin embedded Human breast cancer tissue using 216390(CA3 Antibody) at a dilution of 1/120(Cytoplasm).



In comparison with the IHC on the left, the same paraffin-embedded Human breast cancer tissue is first treated with the fusion protein and then with 216390(Anti-CA3 Antibody) at dilution 1/120.



Gel: 8%SDS-PAGE, Lysate: 40  $\mu$ g;  
 Lane 1-3: Rat skeletal muscle tissue, Mouse skeletal muscle tissue, Human liver tissue lysates;  
 Primary antibody: 216390(CA3 Antibody) at dilution 1/800;  
 Secondary antibody: HRP-conjugated Goat anti rabbit IgG at 1/5000 dilution;  
 Exposure time: 30 seconds