

## CAB39 RABBIT MAB

**Cat.#:** N263244

**Product Name:** Anti-CAB39 Rabbit Monoclonal Antibody

**Synonyms:** MO25; CGI-66

**UNIPROT ID:** Q9Y376

**Background:** Component of a complex that binds and activates STK11/LKB1.

**Immunogen:** A synthetic peptide of human CAB39/MO25

**Applications:** WB,IHC-P,IP

**Recommended Dilutions:** WB: 1/500-1/1000 IHC: 1/50-1/100 IP: 1/20

**Host Species:** Rabbit

**Clonality:** Rabbit Monoclonal

**Clone ID:** R03-4G7

**MW:** Calculated MW: 40 kDa; Observed MW: 40 kDa

**Isotype:** IgG

**Purification:** Affinity Purified

**Species Reactivity:** Human,Mouse,Rat

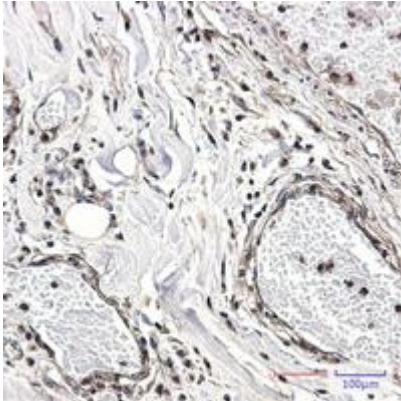
**Conjugation:** Unconjugated

**Modification:** Unmodified

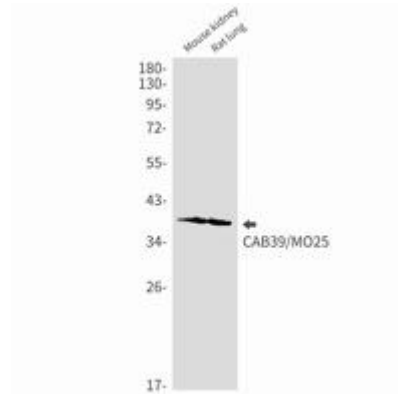
**Constituents:** PBS (without Mg<sup>2+</sup> and Ca<sup>2+</sup>), pH 7.3 containing 50% glycerol, 0.5% BSA and 0.02% sodium azide

**Research Areas:** Signal Transduction

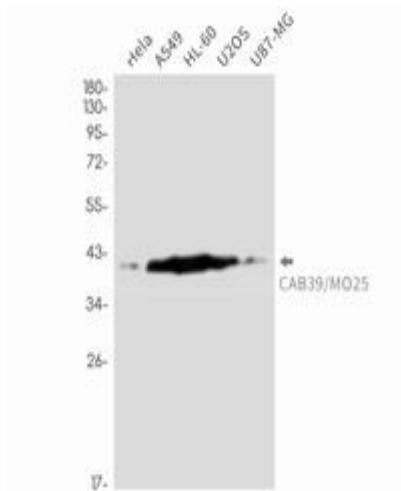
**Storage & Shipping:** Store at -20°C. Avoid repeated freezing and thawing



Immunohistochemistry analysis of paraffin-embedded Human Cholangiocarcinoma using CAB39/MO25 antibody. High-pressure and temperature Sodium Citrate pH 6.0 was used for antigen retrieval.



Western blot analysis of CAB39/MO25 in mouse kidney, rat lung lysates using CAB39 antibody.



Western blot analysis of CAB39/MO25 in HeLa, A549, HL-60, U2OS, U87-MG lysates using CAB39/MO25 antibody.