

CABLES2 RABBIT PAB

Cat.#: S220413

Product Name: Anti-CABLES2 Rabbit Polyclonal Antibody

Synonyms: ik3-2; C20orf150; dJ908M14.2

UNIPROT ID: Q9BTV7 (Gene Accession - NP_112492)

Background: Cables2 (Cdk5 and ABL1 enzyme substrate 2), also known as Ik3-2, is a 478 amino acid ubiquitously expressed protein that has a C-terminal cyclin box-containing domain, making it a member of the cyclin protein superfamily. A related protein, Cables, forms a trimolecular complex with Cdk5 and c-Abl in vivo, enhances apoptosis induced by overexpression of p53 and may be a tumor suppressor, due to its chromosomal loss of heterozygosity that is found in certain cancers. Cables2 shares 78% sequence similarity with Cables in the region of the cyclin box-containing domain and, in similar functionality, associates with Cdk3, Cdk5 and c-Abl. However, unlike its close relative, Cables2 also contains an N-terminal region that enhances not only p53-mediated cell death, but also p53-independent cell death. This characteristic suggests that the gene encoding Cables2 may also function as a tumor suppressor gene.

Immunogen: Synthetic peptide of human CABLES2

Applications: ELISA, IHC

Recommended Dilutions: IHC: 25-100; ELISA: 1000-2000

Host Species: Rabbit

Clonality: Rabbit Polyclonal

Isotype: Immunogen-specific rabbit IgG

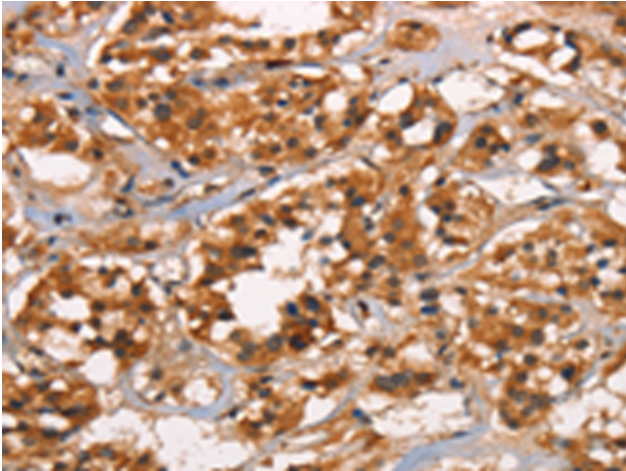
Purification: Antigen affinity purification

Species Reactivity: Human, Mouse

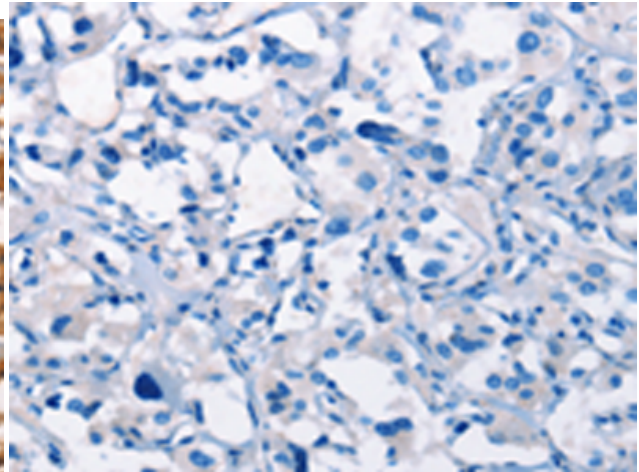
Constituents: PBS (without Mg²⁺ and Ca²⁺), pH 7.4, 150 mM NaCl, 0.05% Sodium Azide and 40% glycerol

Research Areas: Cancer

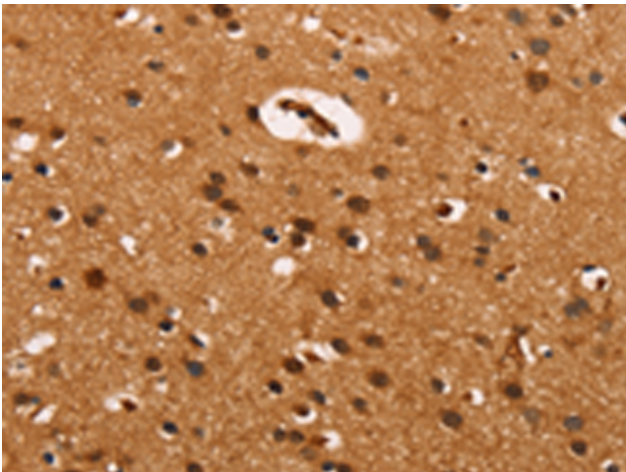
Storage & Shipping: Store at -20°C. Avoid repeated freezing and thawing



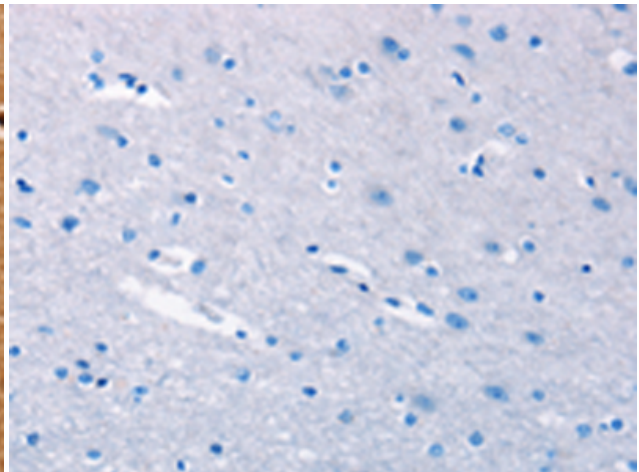
Immunohistochemistry analysis of paraffin embedded Human thyroid cancer tissue using 220413(CABLES2 Antibody) at a dilution of 1/25(Cytoplasm).



In comparison with the IHC on the left, the same paraffin-embedded Human thyroid cancer tissue is first treated with the synthetic peptide and then with 220413(Anti-CABLES2 Antibody) at dilution 1/25.



The image on the left is immunohistochemistry of paraffin-embedded Human brain tissue using 220413(Anti-CABLES2 Antibody) at a dilution of 1/25.



In comparison with the IHC on the left, the same paraffin-embedded Human brain tissue is first treated with synthetic peptide and then with D261496(Anti-CABLES2 Antibody) at dilution 1/25.