

## CACNB3 RABBIT PAB

**Cat.#:** S215424

**Product Name:** Anti-CACNB3 Rabbit Polyclonal Antibody

**Synonyms:** CAB3; CACNLB3

**UNIPROT ID:** P54284 (Gene Accession - NP\_000716 )

**Background:** This gene encodes a regulatory beta subunit of the voltage-dependent calcium channel. Beta subunits are composed of five domains, which contribute to the regulation of surface expression and gating of calcium channels and may also play a role in the regulation of transcription factors and calcium transport.

**Immunogen:** Synthetic peptide of human CACNB3

**Applications:** ELISA, IHC

**Recommended Dilutions:** IHC: 40-200; ELISA: 5000-10000

**Host Species:** Rabbit

**Clonality:** Rabbit Polyclonal

**Isotype:** Immunogen-specific rabbit IgG

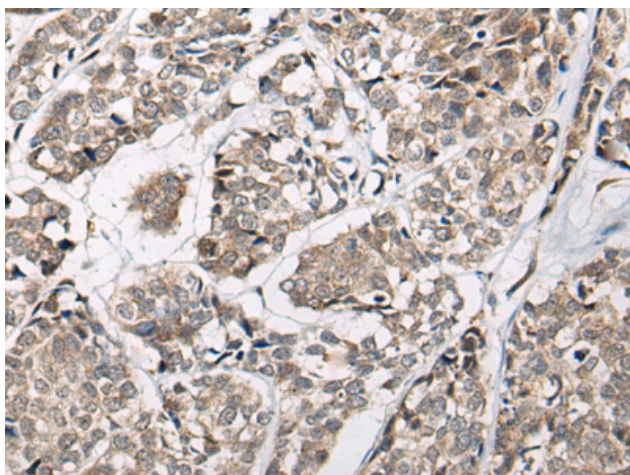
**Purification:** Antigen affinity purification

**Species Reactivity:** Human, Mouse, Rat

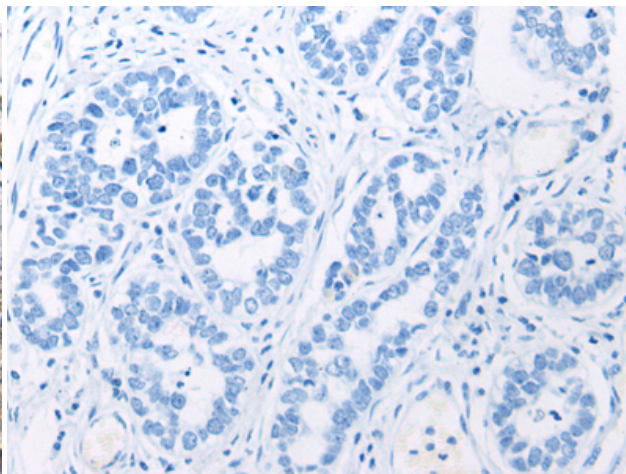
**Constituents:** PBS (without Mg<sup>2+</sup> and Ca<sup>2+</sup>), pH 7.4, 150 mM NaCl, 0.05% Sodium Azide and 40% glycerol

**Research Areas:** Neuroscience

**Storage & Shipping:** Store at -20°C. Avoid repeated freezing and thawing



Immunohistochemistry analysis of paraffin embedded Human esophagus cancer tissue using 215424(CACNB3 Antibody) at a dilution of 1/55(Cell membrane).



In comparison with the IHC on the left, the same paraffin-embedded Human esophagus cancer tissue is first treated with the synthetic peptide and then with 215424(Anti-CACNB3 Antibody) at dilution 1/55.