

CADM2 RABBIT PAB

Cat.#: S221715

Product Name: Anti-CADM2 Rabbit Polyclonal Antibody

Synonyms: NECL3; IGSF4D; Necl-3; synCAM2; SynCAM 2

UNIPROT ID: Q8N3J6 (Gene Accession - NP_001161146)

Background: This gene encodes a member of the synaptic cell adhesion molecule 1 (SynCAM) family which belongs to the immunoglobulin (Ig) superfamily. The encoded protein has three Ig-like domains and a cytosolic protein 4.1 binding site near the C-terminus. Proteins belonging to the protein 4.1 family crosslink spectrin and interact with other cytoskeletal proteins. Multiple transcript variants encoding different isoforms have been found for this gene.

Immunogen: Synthetic peptide of human CADM2

Applications: ELISA, WB, IHC

Recommended Dilutions: IHC: 30-150;WB: 1000-5000;ELISA: 5000-10000

Host Species: Rabbit

Clonality: Rabbit Polyclonal

Isotype: Immunogen-specific rabbit IgG

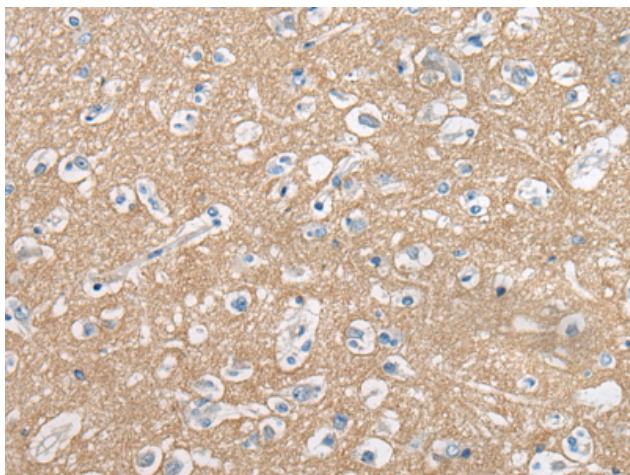
Purification: Antigen affinity purification

Species Reactivity: Human, Mouse, Rat

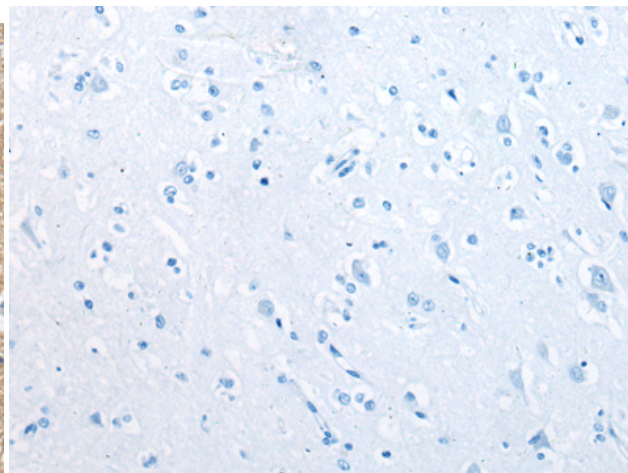
Constituents: PBS (without Mg²⁺ and Ca²⁺), pH 7.4, 150 mM NaCl, 0.05% Sodium Azide and 40% glycerol

Research Areas: Cell Biology

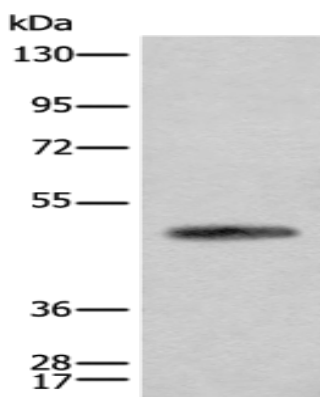
Storage & Shipping: Store at -20°C. Avoid repeated freezing and thawing



Immunohistochemistry analysis of paraffin embedded Human brain tissue using 221715(CADM2 Antibody) at a dilution of 1/45(Cytoplasm and Cell membrane).



In comparison with the IHC on the left, the same paraffin-embedded Human brain tissue is first treated with the synthetic peptide and then with 221715(Anti-CADM2 Antibody) at dilution 1/45.



Gel: 8%SDS-PAGE, Lysate: 20 μ g;
Lane: Human cerebella tissue lysate;
Primary antibody: 221715(CADM2 Antibody) at dilution 1/2000;
Secondary antibody: Goat anti rabbit IgG at 1/8000 dilution;
Exposure time: 1 second