

## CADM3 RABBIT PAB

**Cat.#:** S217227

**Product Name:** Anti-CADM3 Rabbit Polyclonal Antibody

**Synonyms:** BlgR; NECL1; TSLL1; IGSF4B; Necl-1; synCAM3

**UNIPROT ID:** Q8N126 (Gene Accession - BC033819 )

**Background:** Cell adhesion molecule 3 is a protein that in humans is encoded by the CADM3 gene. IGSF4B is a brain-specific protein related to the calcium-independent cell-cell adhesion molecules known as nectins. Involved in the cell-cell adhesion. Has both calcium-independent homophilic cell-cell adhesion activity and calcium-independent heterophilic cell-cell adhesion activity with IGSF4, PVRL1 and PVRL3. Interaction with EPB41L1 may regulate structure or function of cell-cell junctions.

**Immunogen:** Fusion protein of human CADM3

**Applications:** ELISA, IHC

**Recommended Dilutions:** IHC: 50-200; ELISA: 2000-5000

**Host Species:** Rabbit

**Clonality:** Rabbit Polyclonal

**Isotype:** Immunogen-specific rabbit IgG

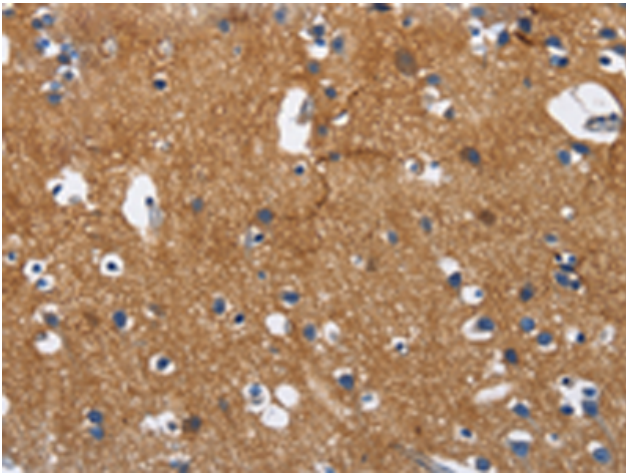
**Purification:** Antigen affinity purification

**Species Reactivity:** Human, Mouse, Rat

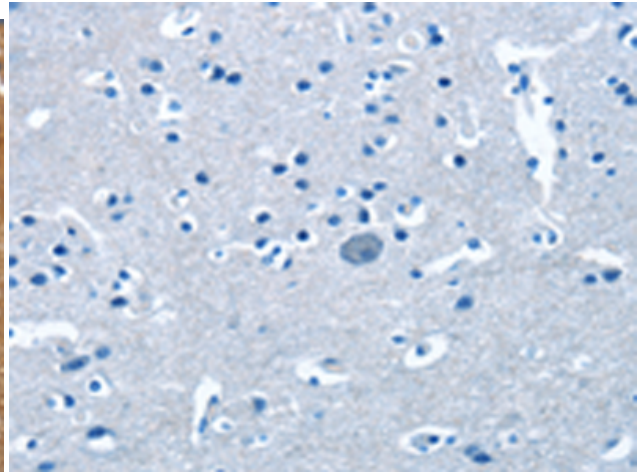
**Constituents:** PBS (without Mg<sup>2+</sup> and Ca<sup>2+</sup>), pH 7.4, 150 mM NaCl, 0.05% Sodium Azide and 40% glycerol

**Research Areas:** Neuroscience

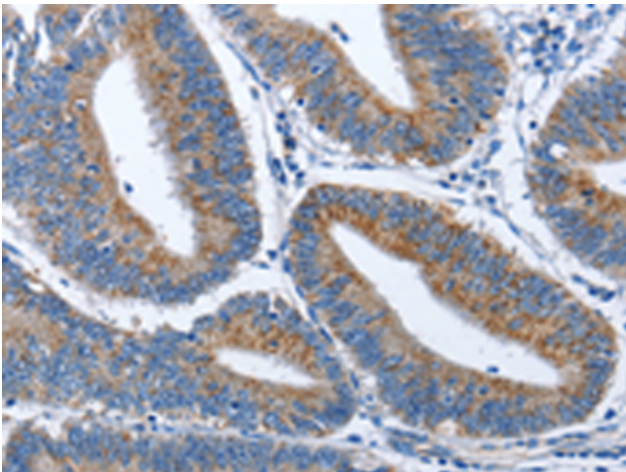
**Storage & Shipping:** Store at -20°C. Avoid repeated freezing and thawing



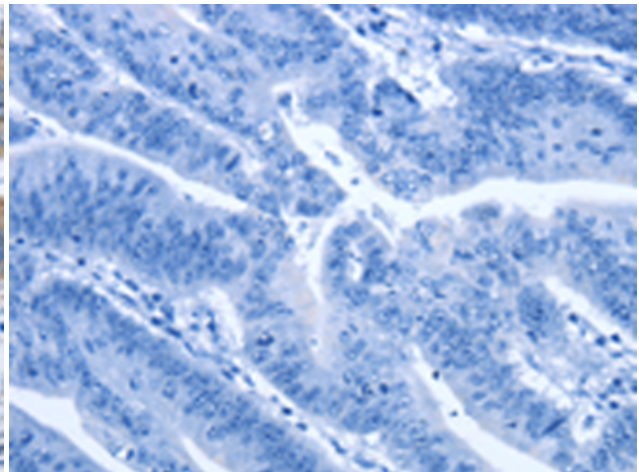
Immunohistochemistry analysis of paraffin-embedded Human brain tissue using 217227(CADM3 Antibody) at a dilution of 1/40(Cytoplasm).



In comparison with the IHC on the left, the same paraffin-embedded Human brain tissue is first treated with the fusion protein and then with 217227(Anti-CADM3 Antibody) at dilution 1/40.



The image on the left is immunohistochemistry of paraffin-embedded Human colon cancer tissue using 217227(Anti-CADM3 Antibody) at a dilution of 1/40.



In comparison with the IHC on the left, the same paraffin-embedded Human colon cancer tissue is first treated with fusion protein and then with D222011(Anti-CADM3 Antibody) at dilution 1/40.