

CADM4 RABBIT PAB

Cat.#: S214201

Product Name: Anti-CADM4 Rabbit Polyclonal Antibody

Synonyms: NECL4; TSLL2; IGSF4C; Necl-4; synCAM4

UNIPROT ID: Q8NFZ8 (Gene Accession - NP_660339)

Background: IGSF4C (immunoglobulin superfamily member 4C), also known as CADM4 (cell adhesion molecule 4), NECL4 or TSLL2, is a 388 amino acid single-pass type I membrane protein that contains one Ig-like V-type domain and two Ig-like C2-type domains. Expressed in kidney, brain and prostate, IGSF4C exists as both a monomer and a homodimer and is thought to be involved in cell-cell adhesion, possibly playing a role in tumor suppression. Human IGSF4C shares 98% sequence identity with its mouse counterpart, suggesting a conserved role between species. The gene encoding IGSF4C maps to human chromosome 19, which is the genetic home for a number of immunoglobulin superfamily members, including the killer cell and leukocyte Ig-like receptors, a number of ICAMs, the CEACAM and PSG family and Fc receptors (FcRs)

Immunogen: Synthetic peptide of human CADM4

Applications: ELISA, WB, IHC

Recommended Dilutions: IHC: 25-100;WB: 200-1000;ELISA: 1000-2000

Host Species: Rabbit

Clonality: Rabbit Polyclonal

Isotype: Immunogen-specific rabbit IgG

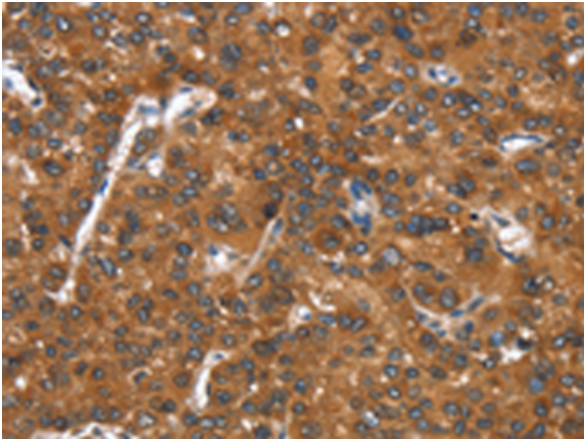
Purification: Antigen affinity purification

Species Reactivity: Human, Mouse, Rat

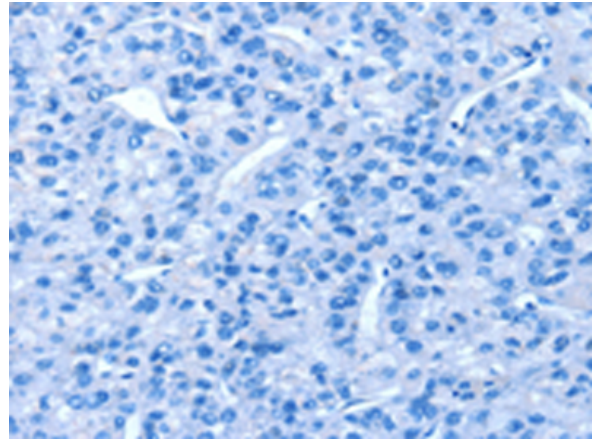
Constituents: PBS (without Mg²⁺ and Ca²⁺), pH 7.4, 150 mM NaCl, 0.05% Sodium Azide and 40% glycerol

Research Areas: Cancer

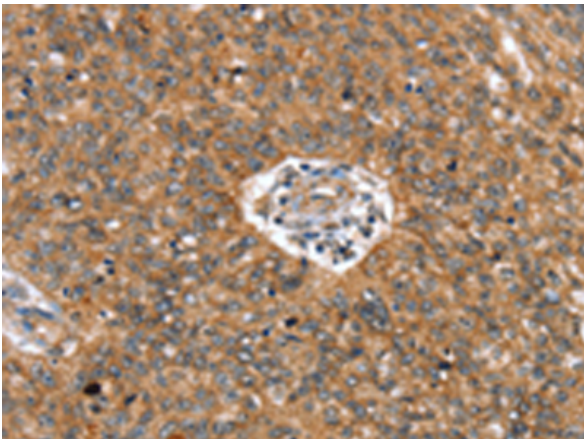
Storage & Shipping: Store at -20°C. Avoid repeated freezing and thawing



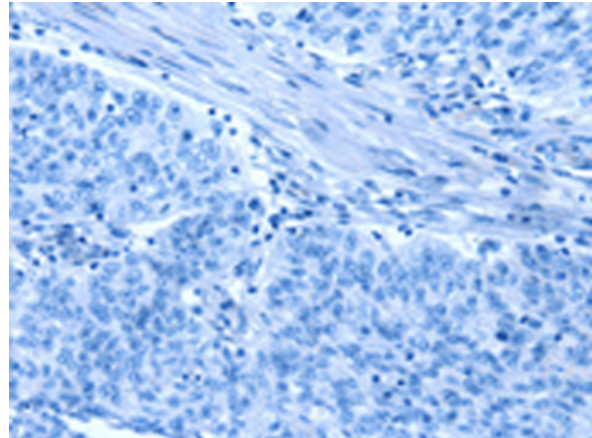
Immunohistochemistry analysis of paraffin embedded Human liver cancer tissue using 214201(CADM4 Antibody) at a dilution of 1/25(Cytoplasm).



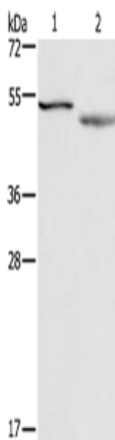
In comparison with the IHC on the left, the same paraffin-embedded Human liver cancer tissue is first treated with the synthetic peptide and then with 214201(Anti-CADM4 Antibody) at dilution 1/25.



The image on the left is immunohistochemistry of paraffin-embedded Human ovarian cancer tissue using 214201(Anti-CADM4 Antibody) at a dilution of 1/25.



In comparison with the IHC on the left, the same paraffin-embedded Human ovarian cancer tissue is first treated with synthetic peptide and then with D161503(Anti-CADM4 Antibody) at dilution 1/25.



Gel: 10%SDS-PAGE, Lysate: 40 µg;
Lane 1-2: RAW264.7 cells, mouse brain tissue;
Primary antibody: 214201(CADM4 Antibody) at dilution 1/300;
Secondary antibody: Goat anti rabbit IgG at 1/8000 dilution;
Exposure time: 20 seconds



Product Description

Pioneering GTPase and Oncogene Product Development since 2010
