

CAGE1 RABBIT PAB

Cat.#: S218421

Product Name: Anti-CAGE1 Rabbit Polyclonal Antibody

Synonyms: CT3; CT95; CTAG3; bA69L16.7

UNIPROT ID: Q8TC20 (Gene Accession - BC026194)

Background: Cancer-associated gene 1 protein (CAGE1) is initially identified as a cancer/testis antigen. CAGE1 is mainly a nuclear protein that displays high expression in testis among normal tissues, and wide expression in various cancer tissues and cancer cell lines. CAGE1 may be associated with tumor progression, while the exact function of CAGE-1 is not well understood.

Immunogen: Fusion protein of human CAGE1

Applications: ELISA, IHC

Recommended Dilutions: IHC: 30-150; ELISA: 5000-10000

Host Species: Rabbit

Clonality: Rabbit Polyclonal

Isotype: Immunogen-specific rabbit IgG

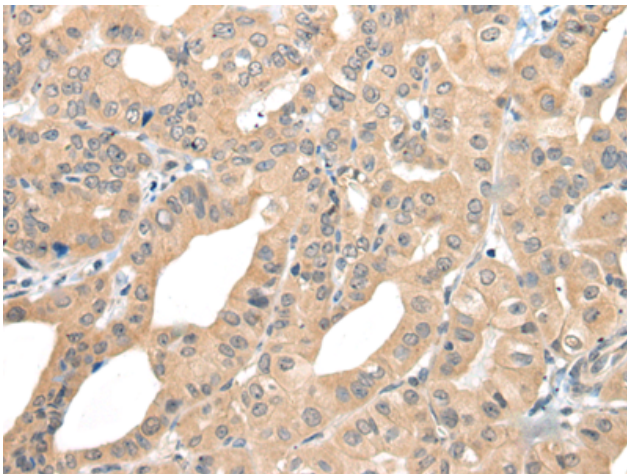
Purification: Antigen affinity purification

Species Reactivity: Human

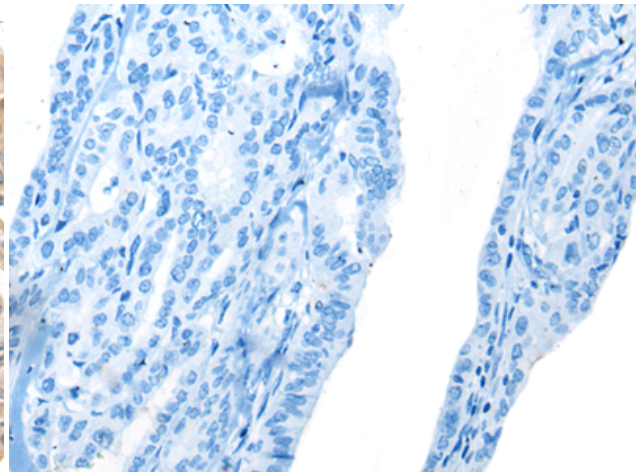
Constituents: PBS (without Mg²⁺ and Ca²⁺), pH 7.4, 150 mM NaCl, 0.05% Sodium Azide and 40% glycerol

Research Areas: Cancer

Storage & Shipping: Store at -20°C. Avoid repeated freezing and thawing



Immunohistochemistry analysis of paraffin embedded Human thyroid cancer tissue using 218421(CAGE1 Antibody) at a dilution of 1/35(Cytoplasm).



In comparison with the IHC on the left, the same paraffin-embedded Human thyroid cancer tissue is first treated with the fusion protein and then with 218421(Anti-CAGE1 Antibody) at dilution 1/35.