

CAGE1 RABBIT PAB

Cat.#: S220419

Product Name: Anti-CAGE1 Rabbit Polyclonal Antibody

Synonyms: CT3; CT95; CTAG3; bA69L16.7

UNIPROT ID: Q8TC20 (Gene Accession - NP_001164164)

Background: CAGE1, also known as CT3; CT95; CTAG3; bA69L16.7, is a 639-amino acid protein. It shares 76% sequence identity with a monkey homolog. RT-PCR analysis detected testis-specific expression among normal tissues and wide expression among various cancer tissues and cancer cell lines including those from cervical, melanoma, hepatic, renal, myeloma, and breast cancers. CTAG3 was overexpressed in cancer tissues compared with surrounding noncancerous tissues. Transfection experiments with a GFP-CTAG3 construct indicated a predominantly nuclear localization.

Immunogen: Synthetic peptide of human CAGE1

Applications: ELISA, IHC

Recommended Dilutions: IHC: 25-100; ELISA: 1000-2000

Host Species: Rabbit

Clonality: Rabbit Polyclonal

Isotype: Immunogen-specific rabbit IgG

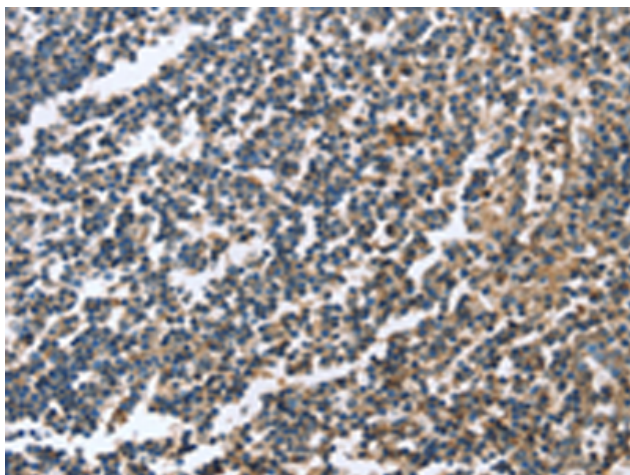
Purification: Antigen affinity purification

Species Reactivity: Human

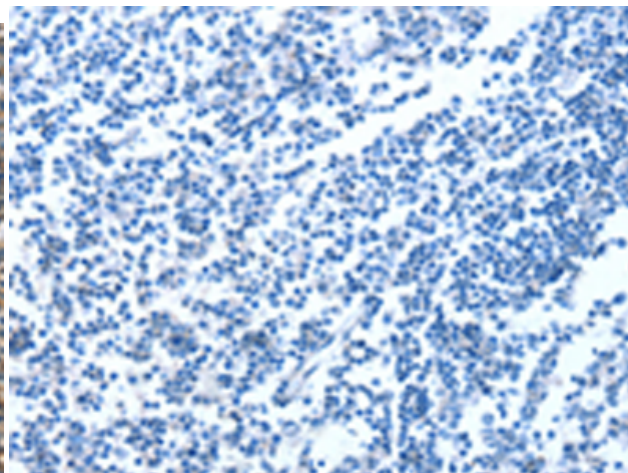
Constituents: PBS (without Mg²⁺ and Ca²⁺), pH 7.4, 150 mM NaCl, 0.05% Sodium Azide and 40% glycerol

Research Areas: Cancer

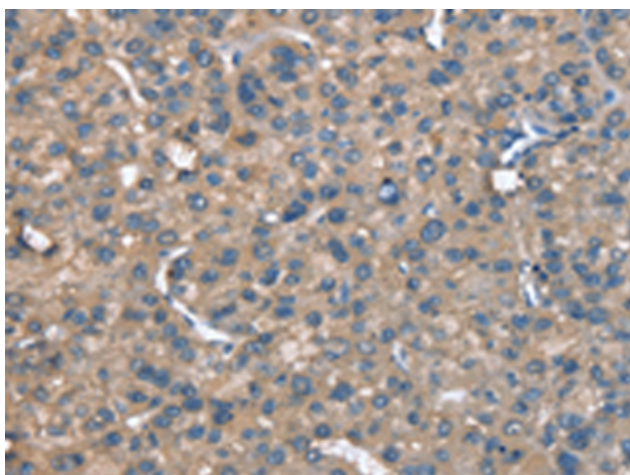
Storage & Shipping: Store at -20°C. Avoid repeated freezing and thawing



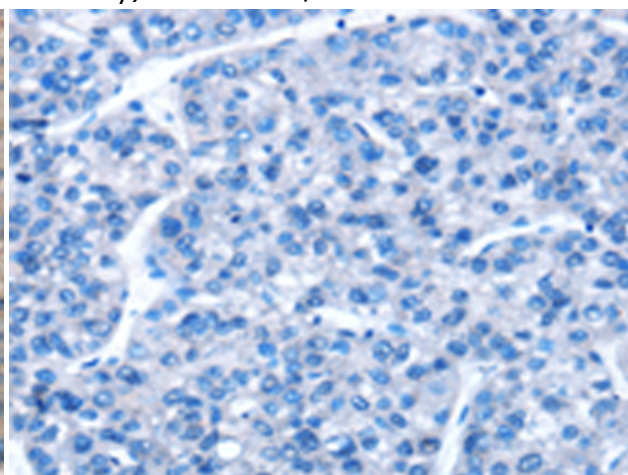
Immunohistochemistry analysis of paraffin embedded Human tonsil tissue using 220419(CAGE1 Antibody) at a dilution of 1/20(Cytoplasm).



In comparison with the IHC on the left, the same paraffin-embedded Human tonsil tissue is first treated with the synthetic peptide and then with 220419(Anti-CAGE1 Antibody) at dilution 1/20.



The image on the left is immunohistochemistry of paraffin-embedded Human liver cancer tissue using 220419(Anti-CAGE1 Antibody) at a dilution of 1/20.



In comparison with the IHC on the left, the same paraffin-embedded Human liver cancer tissue is first treated with synthetic peptide and then with D261504(Anti-CAGE1 Antibody) at dilution 1/20.