

## CALB1 RABBIT PAB

**Cat.#:** S217228

**Product Name:** Anti-CALB1 Rabbit Polyclonal Antibody

**Synonyms:** CALB

**UNIPROT ID:** P05937 (Gene Accession - NP\_004920 )

**Background:** Calbindin is a calcium-binding protein belonging to the troponin C superfamily. It was originally described as a 27-kD protein induced by vitamin D in the duodenum of the chick. In the brain, its synthesis is independent of vitamin-D-derived hormones. Calbindin contains 4 active calcium-binding domains, and 2 modified domains that presumably have lost their calcium-binding capacity. The neurons in brains of patients with Huntington disease are calbindin-depleted.

**Immunogen:** Fusion protein of human CALB1

**Applications:** ELISA, WB, IHC

**Recommended Dilutions:** IHC: 100-300;WB: 500-2000;ELISA: 2000-5000

**Host Species:** Rabbit

**Clonality:** Rabbit Polyclonal

**Isotype:** Immunogen-specific rabbit IgG

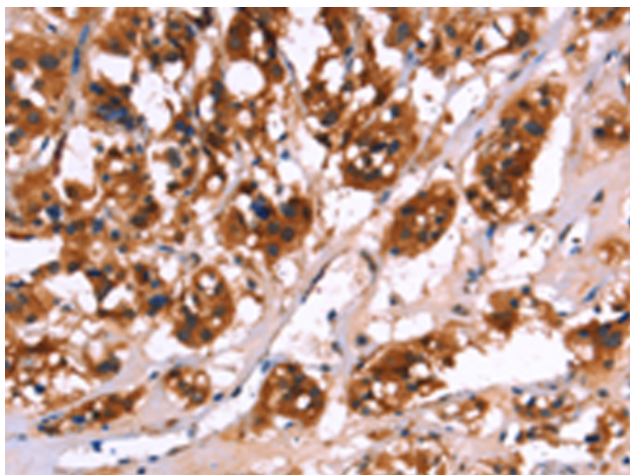
**Purification:** Antigen affinity purification

**Species Reactivity:** Human, Mouse, Rat

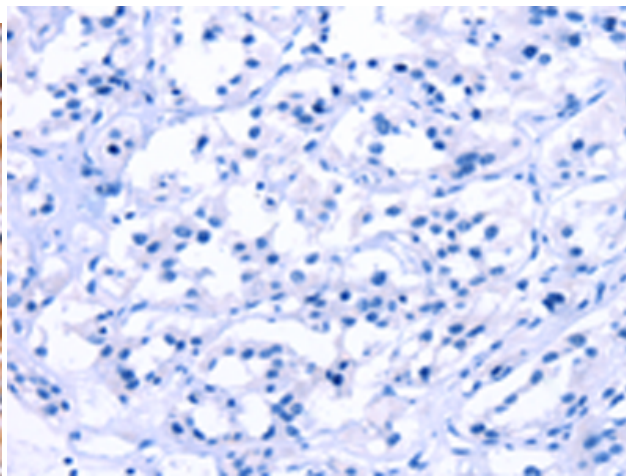
**Constituents:** PBS (without Mg<sup>2+</sup> and Ca<sup>2+</sup>), pH 7.4, 150 mM NaCl, 0.05% Sodium Azide and 40% glycerol

**Research Areas:** Neuroscience

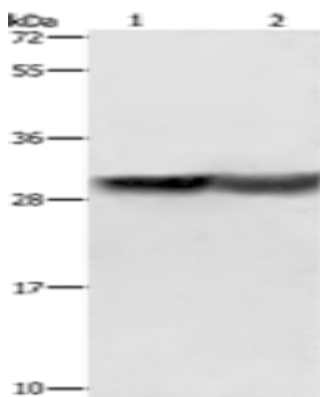
**Storage & Shipping:** Store at -20°C. Avoid repeated freezing and thawing



Immunohistochemistry analysis of paraffin embedded Human thyroid cancer tissue using 217228 (CALB1 Antibody) at a dilution of 1/50 (Nucleus and Cytoplasm).



In comparison with the IHC on the left, the same paraffin-embedded Human thyroid cancer tissue is first treated with the fusion protein and then with 217228 (Anti-CALB1 Antibody) at dilution 1/50.



Gel: 8% SDS-PAGE, Lysate: 40  $\mu$ g;  
Lane 1-2: Human fetal brain tissue, mouse kidney tissue;  
Primary antibody: 217228 (CALB1 Antibody) at dilution 1/600;  
Secondary antibody: Goat anti rabbit IgG at 1/8000 dilution;  
Exposure time: 40 seconds