

CALBINDIN RABBIT MAB

Cat.#: N261946

Product Name: Anti-Calbindin Rabbit Monoclonal Antibody

Synonyms: Calbindin

UNIPROT ID: P12658

Background: Buffers cytosolic calcium. May stimulate a membrane Ca^{2+} -ATPase and a 3',5'-cyclic nucleotide phosphodiesterase.

Immunogen: Recombinant protein of mouse Calbindin

Applications: WB,IHC-P,IP

Recommended Dilutions: WB: 1/500-1/1000 IHC: 1/50-1/100 IP: 1/20

Host Species: Rabbit

Clonality: Rabbit Monoclonal

Clone ID: R06-4D6

MW: Calculated MW: 30 kDa; Observed MW: 30 kDa

Isotype: IgG

Purification: Affinity Purified

Species Reactivity: Human,Mouse,Rat

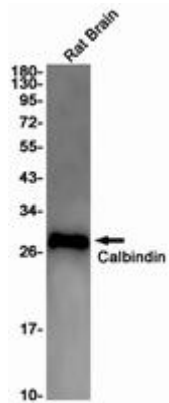
Conjugation: Unconjugated

Modification: Unmodified

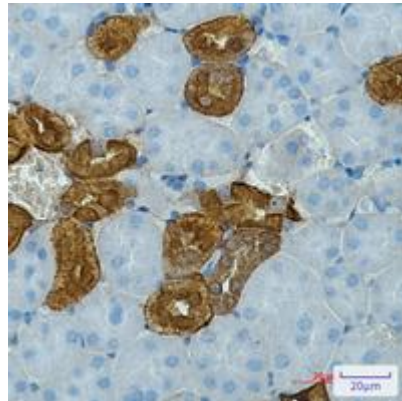
Constituents: PBS (without Mg^{2+} and Ca^{2+}), pH 7.3 containing 50% glycerol, 0.5% BSA and 0.02% sodium azide

Research Areas: Neuroscience

Storage & Shipping: Store at -20°C . Avoid repeated freezing and thawing



Western blot analysis of Calbindin in rat Brain lysates using Calbindin antibody.



Immunohistochemistry analysis of paraffin-embedded mouse kidney using Calbindin antibody. High-pressure and temperature Sodium Citrate pH 6.0 was used for antigen retrieval.