

CALCINEURIN A RABBIT MAB

Cat.#: N263246

Product Name: Anti-Calcineurin A Rabbit Monoclonal Antibody

Synonyms: PPP3CA; CALNA; CNA; Serine/threonine-protein phosphatase 2B catalytic subunit alpha isoform; CAM-PRP catalytic subunit; Calmodulin-dependent calcineurin A subunit alpha isoform

UNIPROT ID: Q08209

Background: Calcineurin, also known as protein phosphatase 2B (PP2B), is a calmodulin-dependent, calcium-activated, serine/threonine protein phosphatase composed of a catalytic subunit (calcineurin A) and a tightly bound regulatory subunit (calcineurin B). Calcium-dependent, calmodulin-stimulated protein phosphatase. This subunit may have a role in the calmodulin activation of calcineurin. Dephosphorylates DNML1, HSPB1 and SSH1.

Immunogen: A synthetic peptide of human Calcineurin A

Applications: WB,IP

Recommended Dilutions: WB: 1/500-1/1000 IP: 1/20

Host Species: Rabbit

Clonality: Rabbit Monoclonal

Clone ID: R01-6F5

MW: Calculated MW: 59 kDa; Observed MW: 59 kDa

Isotype: IgG

Purification: Affinity Purified

Species Reactivity: Human,Mouse,Rat

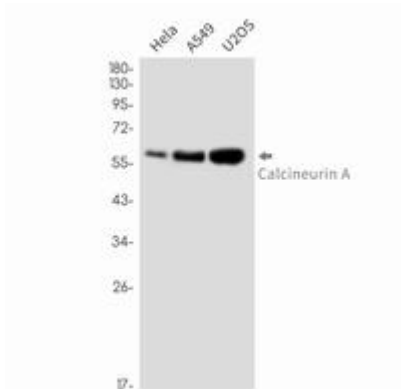
Conjugation: Unconjugated

Modification: Unmodified

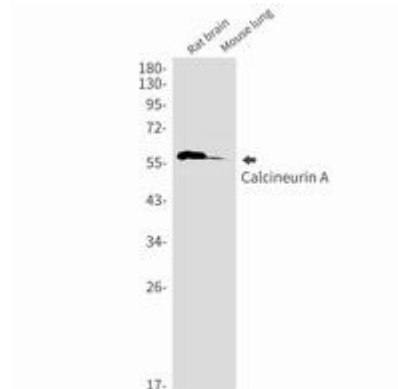
Constituents: PBS (without Mg²⁺ and Ca²⁺), pH 7.3 containing 50% glycerol, 0.5% BSA and 0.02% sodium azide

Research Areas: Immunology

Storage & Shipping: Store at -20°C. Avoid repeated freezing and thawing



Western blot analysis of Calcineurin A in HeLa, A549, U2OS lysates using Calcineurin A antibody.



Western blot analysis of Calcineurin A in rat brain, mouse lung lysates using Calcineurin A antibody.