

## CALCOCO1 RABBIT PAB

**Cat.#:** S218521

**Product Name:** Anti-CALCOCO1 Rabbit Polyclonal Antibody

**Synonyms:** Cocoa; PP13275; calphoglin

**UNIPROT ID:** Q9P1Z2 (Gene Accession - BC003177 )

**Background:** Enables several functions, including armadillo repeat domain binding activity; beta-catenin binding activity; and nuclear receptor coactivator activity. Involved in positive regulation of gene expression and positive regulation of transcription, DNA-templated. Located in cytosol and nucleus.

**Immunogen:** Fusion protein of human CALCOCO1

**Applications:** ELISA, WB, IHC

**Recommended Dilutions:** IHC: 50–200;WB: 1000–5000;ELISA: 5000–10000

**Host Species:** Rabbit

**Clonality:** Rabbit Polyclonal

**Isotype:** Immunogen-specific rabbit IgG

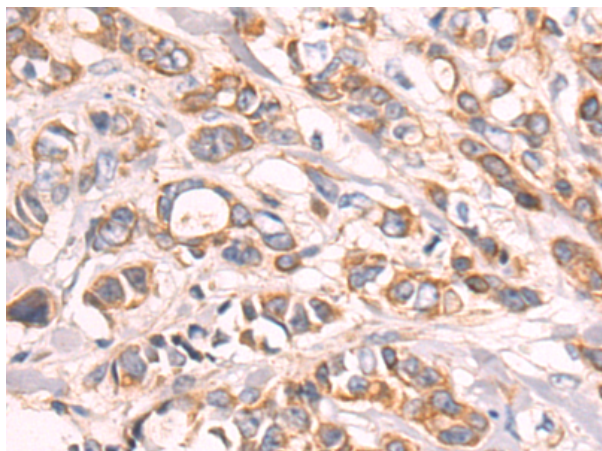
**Purification:** Antigen affinity purification

**Species Reactivity:** Human, Mouse, Rat

**Constituents:** PBS (without Mg<sup>2+</sup> and Ca<sup>2+</sup>), pH 7.4, 150 mM NaCl, 0.05% Sodium Azide and 40% glycerol

**Research Areas:** Signal Transduction, Epigenetics and Nuclear Signaling

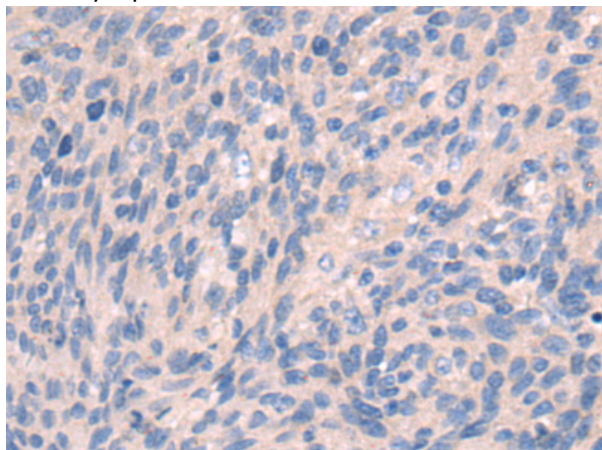
**Storage & Shipping:** Store at –20°C. Avoid repeated freezing and thawing



Immunohistochemistry analysis of paraffin embedded Human breast cancer tissue using 218521(CALCOCO1 Antibody) at a dilution of 1/55(Cytoplasm).



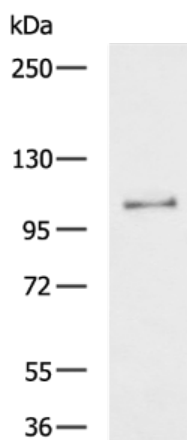
In comparison with the IHC on the left, the same paraffin-embedded Human breast cancer tissue is first treated with the fusion protein and then with 218521(Anti-CALCOCO1 Antibody) at dilution 1/55.



The image on the left is immunohistochemistry of paraffin-embedded Human cervical cancer tissue using 218521(Anti-CALCOCO1 Antibody) at a dilution of 1/55.



In comparison with the IHC on the left, the same paraffin-embedded Human cervical cancer tissue is first treated with fusion protein and then with D224611(Anti-CALCOCO1 Antibody) at dilution 1/55.



Gel: 6%SDS-PAGE, Lysate: 40 µg;

Lane: 293T cell lysate;

Primary antibody: 218521(CALCOCO1 Antibody) at dilution 1/800;

Secondary antibody: HRP-conjugated Goat anti rabbit IgG at 1/5000 dilution;

Exposure time: 10 seconds

