

## CALD1 RABBIT PAB

**Cat.#:** S216379

**Product Name:** Anti-CALD1 Rabbit Polyclonal Antibody

**Synonyms:** CDM, HCAD, LCAD, H-CAD, L-CAD, NAG22

**UNIPROT ID:** Q05682 (Gene Accession - BC040354 )

**Background:** This gene encodes a calmodulin- and actin-binding protein that plays an essential role in the regulation of smooth muscle and nonmuscle contraction. The conserved domain of this protein possesses the binding activities to Ca(2+)-calmodulin, actin, tropomyosin, myosin, and phospholipids. This protein is a potent inhibitor of the actin-tropomyosin activated myosin MgATPase, and serves as a mediating factor for Ca(2+)-dependent inhibition of smooth muscle contraction. Alternative splicing of this gene results in multiple transcript variants encoding distinct isoforms.

**Immunogen:** Fusion protein of human CALD1

**Applications:** ELISA, WB, IHC

**Recommended Dilutions:** IHC: 50-150;WB: 1000-5000;ELISA: 2000-10000

**Host Species:** Rabbit

**Clonality:** Rabbit Polyclonal

**Isotype:** Immunogen-specific rabbit IgG

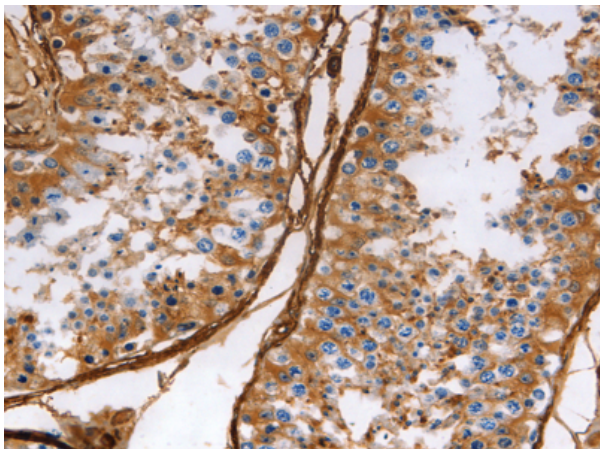
**Purification:** Antigen affinity purification

**Species Reactivity:** Human, Rat

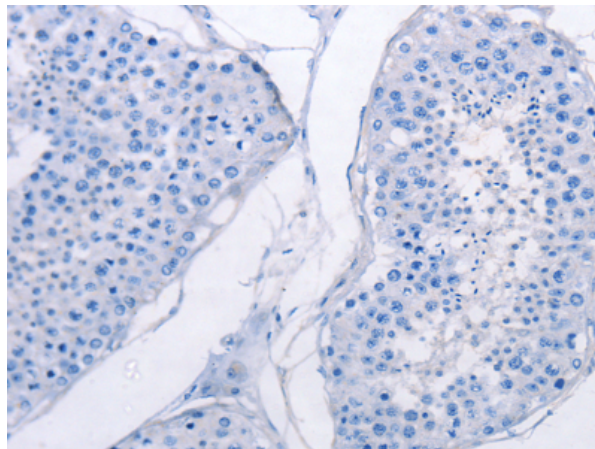
**Constituents:** PBS (without Mg<sup>2+</sup> and Ca<sup>2+</sup>), pH 7.4, 150 mM NaCl, 0.05% Sodium Azide and 40% glycerol

**Research Areas:** Signal Transduction, Cardiovascular

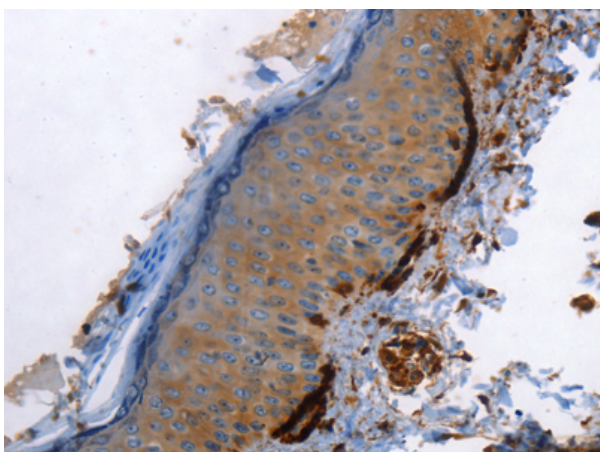
**Storage & Shipping:** Store at -20°C. Avoid repeated freezing and thawing



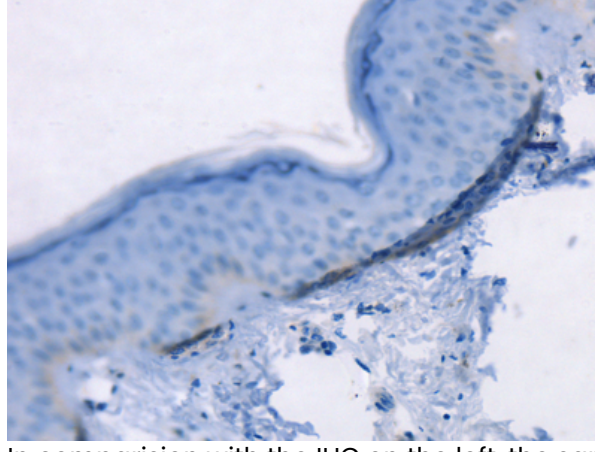
Immunohistochemistry analysis of paraffin embedded Human testis tissue using 216379(CALD1 Antibody) at a dilution of 1/40(Cytoplasm).



In comparison with the IHC on the left, the same paraffin-embedded Human testis tissue is first treated with the fusion protein and then with 216379(Anti-CALD1 Antibody) at dilution 1/40.



The image on the left is immunohistochemistry of paraffin-embedded Human skin tissue using 216379(Anti-CALD1 Antibody) at a dilution of 1/40.



In comparison with the IHC on the left, the same paraffin-embedded Human skin tissue is first treated with fusion protein and then with D220327(Anti-CALD1 Antibody) at dilution 1/40.



Gel: 10%SDS-PAGE, Lysate: 30 µg;  
Lane: 293T cells;  
Primary antibody: 216379(CALD1 Antibody) at dilution 1/800;  
Secondary antibody: Goat anti rabbit IgG at 1/8000 dilution;  
Exposure time: 30 seconds



# Product Description

Pioneering GTPase and Oncogene Product Development since 2010

---